

# **BASEBALL**

**2021 SEMI-STATE INSTRUCTIONS  
FOR MANAGERS, PARTICIPATING TEAMS AND FANS**

***DRAFT***

**THE INFORMATION INCLUDED WITHIN  
THESE INSTRUCTIONS IS TENTATIVE AND  
SUBJECT TO CHANGE**



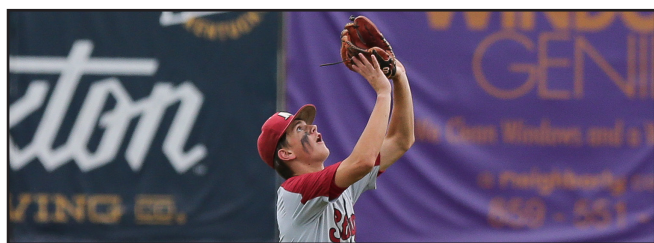
# 2021 Baseball Semi-State Instructions

## Table of Contents

- Brief Welcome**..... 3
- KHSAA Contacts** ..... 3
- Covid-19 Guidance** ..... 3
  - Basic COVID-19 Standards..... 3
  - Attendance Limitations ..... 3
  - Admission Into Venues With Symptoms of COVID-19..... 3
  - Masks, Face Coverings ..... 4
  - Social Distancing (Required Where Practical and Feasible) .. 4
  - Cross-Reference to Other Guidance..... 4
- General Information** ..... 4
  - Administrative and Field Setup..... 4
  - Officiating (Mechanics) (Adopted for 2020-21) ..... 4
  - Officiating (Rules) (Adopted for 2020-21) ..... 5
- Qualifying for Participation in Semi-State Round** ..... 5
- Competition Dates, Schedule and Locations** ..... 5
  - Dates ..... 5
  - Schedule and Locations ..... 5
  - Timetable ..... 6
- Tournament Manager Duties** ..... 6
  - Host Site Manager..... 6
  - Tickets and Fan Admission ..... 6
  - Financial Reporting..... 6
  - Pre-Event..... 6
  - During the Games ..... 7
- Bylaw 22 Reminder** ..... 7
  - Requirement to Accompany Team Members..... 7
- Rosters, Limitations and Substitutions, Team Party** ... 7
  - Postseason Rosters ..... 7
  - Limitations and Substitutions ..... 7
  - Team Admission and Field and Dugout Limitations ..... 7
  - Team Party ..... 8
- Venue Logistics**..... 8
  - Dressing/Locker Rooms..... 8
  - Practice..... 8
  - Home and Visiting Team Dugouts ..... 8
  - Signage, Balloons, Noisemakers and Band Performances.... 8
  - Water - COVID-19 Guidance ..... 9
- Conducting the Event** ..... 9
  - Format of Event ..... 9
  - Field Specifications ..... 9
  - Required Ball Type ..... 9
  - Contest Completion Reminders ..... 9
  - Infield Practice..... 9
  - Speed-Up Rules - Run Rules and Courtesy Runners..... 9
  - Pitcher Warm-Up Area ..... 9
  - Pitch Count Regulation..... 10
  - Use of Electronic Devices..... 10
- Umpire Assignments and Fees** ..... 10
- Sportsmanship**..... 10
- Venue Specific Information**..... 10
  - COVID-19 Guidelines ..... 10
  - Security..... 10
  - Venue Safety ..... 11
- Medical Provisions** ..... 11
  - Emergency Action Plan ..... 11
  - Inclement Weather ..... 11
  - Heat Index Program..... 11
- Videotaping, Media and Intellectual Property Rights**..... 12
  - School Media Credentials..... 12
  - Traditional Media Credentials..... 12
  - General Media Rights..... 12

- Radio Broadcasts..... 13
- Media Rights Fee..... 13
- Telecast/Webcast Including NFHS Network Restrictions .... 13
- Baseball Media Area..... 13
- Music Copyright ..... 14
- Event Merchandise**..... 14
- Post Event** ..... 14
  - Reporting Results ..... 14
  - Trophies and Awards ..... 14
  - Financial Report Form (GE88) ..... 14
  - Expense Reimbursement ..... 14
- Instructions for Teams Advancing** ..... 14
  - Team Information Form (GE63) ..... 14
- Important Website Links** ..... 14

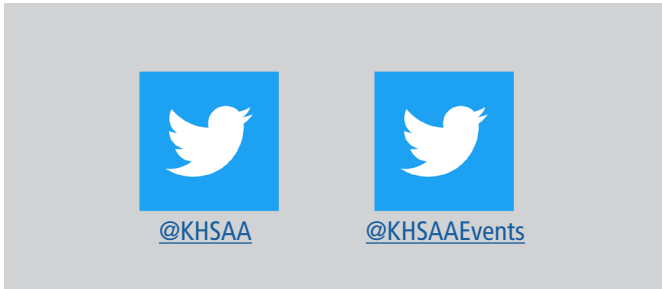
**Throughout these instructions, portions that are different from previous seasons, or changed due to COVID-19, have been highlighted yellow.**



2280 Executive Drive | Lexington, Ky., 40505 | [www.KHSAA.org](http://www.KHSAA.org)

### KHSAA Staff

- Commissioner ..... Julian Tackett
- Associate Commissioner ..... Butch Cope
- Assistant Commissioner ..... Michael Barren
- Assistant Commissioner ..... Darren Bilberry
- Assistant Commissioner ..... Sarah Bridenbaugh
- General Counsel..... Chad Collins
- Communications Director..... Joe Angolia
- Information Technology Director ..... Rob Catron
- Event Management Specialist..... Dan White
- Administrative Assistant ..... Kara Howard
- Administrative Support Specialist ..... Jeremy Ison
- Administrative Support Specialist ..... Jeanie Molloy
- Physical Plant Director ..... Roy Tatum





## 2021 Baseball Semi-State Instructions

### BRIEF WELCOME

Congratulations on behalf of the Kentucky High School Athletic Association Board of Control and staff for advancing to the semi-state round of the 2021 KHSAA State Baseball Tournament.

Refer to this manual and the important website links included at the end of the document to guide you through preparation for your participation.

### KHSAA CONTACTS

The primary contact for baseball is Associate Commissioner Butch Cope ([bcope@khsaa.org](mailto:bcope@khsaa.org)).

If Mr. Cope is not available, Assistant Commissioner Darren Bilberry ([dbilberry@khsaa.org](mailto:dbilberry@khsaa.org)) is the backup contact.

Media, broadcast/webcast and statistics related questions should be directed to the Association's Communications Director, Joe Angolia ([jangolia@khsaa.org](mailto:jangolia@khsaa.org)).

Questions may also be directed to the KHSAA offices at (859) 299-5472 and any member of the staff can refer you to the correct party.

### COVID-19 GUIDANCE

#### BASIC COVID-19 STANDARDS

The KHSAA's complete "Healthy at Sports, Stage 3 - Performance, Return to Competition: Considerations for Spring Sports & Sport-Activities" document for baseball can be found at the following link: <https://bit.ly/3hAe1nn>

In addition to baseball specific guidance, this document includes guidance for all sports, officials and officiating, COVID-19 Medical Evaluation and Return-to-Play protocol, as well as the KHSAA's COVID-19 Return to Play Form.

The information in this document should be thoroughly reviewed by all managers, participants and spectators attending a semi-state contest.

Differences in the guidance are necessitated by the differences in sports, facilities, geographic areas, and pronounced differences during normal years and magnified this school year.

Please note that many of these items are very fluid and are changing rapidly at this stage of the pandemic, therefore coaches and fans should monitor the KHSAA twitter feed (@khsaa and @khsaaevents), as well as the KHSAA Facebook page for updates.

#### ATTENDANCE LIMITATIONS

Attendance limits are at 100% of capacity due to the Governor's restrictions being lifted, unless individual facilities hosting an event have specific limits in place.

Ticket availability from the KHSAA will be set accordingly in those instances.

The move to 100% capacity does not supersede the requirement for venues to utilize social distancing where practical and feasible in accordance with CDC guidelines.

#### ADMISSION INTO VENUES WITH SYMPTOMS OF COVID-19

REMINDER - Any individual with symptoms of COVID-19 shall not be admitted.

Symptoms may appear 2-14 days after exposure to the virus. People with these symptoms may have COVID-19:

- Fever or chills
- Cough
- Shortness of breath or difficulty breathing
- Fatigue
- Muscle or body aches
- Headache
- New loss of taste or smell
- Sore throat
- Congestion or runny nose
- Nausea or vomiting



## 2021 Baseball Semi-State Instructions

- Diarrhea

Look for emergency warning signs for COVID-19. If someone is showing any of these signs, seek emergency medical care immediately:

- Trouble breathing
- Persistent pain or pressure in the chest
- New confusion
- Inability to wake or stay awake
- Pale, gray, or blue-colored skin, lips, or nail beds, depending on skin tone

### **MASKS, FACE COVERINGS**

All non-participants entering a venue before, during, and after a contest who are fully vaccinated as defined by the CDC should consider wearing a mask/face covering but it is not required.

All non-participants entering a venue before, during, and after a contest who are not fully vaccinated as defined by the CDC are required to wear a mask/face covering unless they are actively eating or drinking, and unless the Governor's mandated mask order has been lifted.

All participants entering a venue before, during, and after a contest should consider wearing a mask/face covering but it is not required.

### **SOCIAL DISTANCING (REQUIRED WHERE PRACTICAL AND FEASIBLE)**

Social distancing should be maintained at all times, where feasible for all involved in the contests, but required for spectators at all times by sitting apart from individuals from other households, unless all are vaccinated.

### **CROSS-REFERENCE TO OTHER GUIDANCE**

All individuals involved in the athletic program are expected to reference all guidance standards, including those in this sports-specific guidance and the All Sports Guidance document.

If there is an ambiguity between recommended guidelines, the most stringent should apply, and deference shall be given to the KHSAA Return to Play Material as other resources amend their guidance later.

## **GENERAL INFORMATION**

### **ADMINISTRATIVE AND FIELD SETUP**

There shall be no shared equipment (batting helmets, gloves, gear, etc.) (RECOMMENDED)

Players and coaches must bring their own water bottles. (REQUIRED)

Press box shall be limited to event staff personnel (PA, Scorer) and media and must be socially distanced. (RECOMMENDED)

All individuals shall be prepared to exit the facility as efficiently as possible. (RECOMMENDED)

Stagger use of communal areas and clean and disinfect frequently touched surfaces. (RECOMMENDED)

Sanitizing supplies shall be available in both dugouts. (RECOMMENDED)

Exercise social distancing within the dugout. (RECOMMENDED)

### **OFFICIATING (MECHANICS) (ADOPTED FOR 2020-21)**

No sharing of equipment. (RECOMMENDED)

There are no color restrictions to face coverings for umpires. (REQUIRED)

Umpires must bring their own water bottles. (REQUIRED)

Umpires should arrive dressed and ready to work. (RECOMMENDED)

Use three-part line-up cards so that each coach and the umpire has their own copy. (CONSIDER)

Keep the catcher and batter at a 6-foot distance when dusting off the plate. (RECOMMENDED)

Base umpires should maintain six (6) feet from any player as a starting position when rotated and/or counter rotated. (RECOMMENDED)



## 2021 Baseball Semi-State Instructions

The pregame conference is to be limited to one (1) coach from each team plus the umpires and utilize social distancing principles and all should wear masks/face coverings unless fully vaccinated. (RECOMMENDED)

10-2: Umpire in chief should wear a face covering or splash shield behind the plate. (RECOMMENDED)

10-2-1: Plate umpire should stand deeper than normal to call balls and strikes. (CONSIDER)

### OFFICIATING (RULES) (ADOPTED FOR 2020-21)

Limit the players dressed in the dugout to 21. (REQUIRED)

Face coverings should be worn and social distancing utilized when discussions occur between head coach and umpire unless fully vaccinated. (CONSIDER)

Eliminate handshakes during the pregame conference and between teams following the contest. (RECOMMENDED)

Disinfect players' personal equipment/uniform after each game/practice. (RECOMMENDED)

All conferences (charged, defensive, rule discussion or substitution reporting) shall require all participants to maintain at least 6-foot social distance spacing.

1-2-4: If the dugout is extended, it is to be in direction toward foul pole. (REQUIRED)

1-5-4: Plastic shields covering the entire face (unless integrated into the face mask and attached to a helmet or manufactured exclusively for wear during baseball and softball games) shall not be allowed during contests or in practice. (REQUIRED)

1-4-2: Athletes are permitted to wear gloves and/or masks/face coverings during competition with no restriction on color or type other than the pitcher who cannot wear a white glove. (REQUIRED)

1-8: Pitchers cannot wear white facial coverings while pitching. (REQUIRED)

3-5-2: Base coaches must stay six (6) feet from a runner at all times after suspension of play. (RECOMMENDED)

3-3-1a: Players are not permitted to leave the dugout area to congratulate players when scoring or after home runs. (RECOMMENDED)

6-2-1-b: Pitchers may not spit on the ball or glove. (REQUIRED)

### QUALIFYING FOR PARTICIPATION IN SEMI-STATE ROUND

The winning teams from the 16 Region Tournaments advance to the semi-state round of the State Tournament.

Semi-state region pairings that determine the host school are on the KHSAA website and included as a link at the end of these instructions.

Semi-state matchups were decided by an established rotation published on the KHSAA website.

### COMPETITION DATES, SCHEDULE AND LOCATIONS

#### DATES

Games will be played on Saturday, June 12 in accordance with the set KHSAA time schedule.

The state baseball tournament is scheduled to be played on June 16-19 at Legends Field in Lexington.

#### SCHEDULE AND LOCATIONS

- Region 3 vs. Region 2 | June 12 | 1 p.m. CT ([Western Kentucky University](#))
- Region 1 vs. Region 4 | June 12 | 4:30 p.m. CT ([Western Kentucky University](#))
- Region 7 vs. Region 6 | June 12 | 1 p.m. ET ([Elizabethtown High School](#))
- Region 5 vs. Region 8 | June 12 | 4:30 p.m. ET ([Elizabethtown High School](#))
- Region 9 vs. Region 12 | June 12 | 1 p.m. ET ([University of Kentucky](#))
- Region 11 vs. Region 10 | June 12 | 4:30 p.m. ET ([University of Kentucky](#))
- Region 15 vs. Region 14 | June 12 | 1 p.m. ET ([Morehead State University](#))
- Region 13 vs. Region 16 | June 12 | 4:30 p.m. ET ([Morehead State University](#))
  - o Region listed first shall be the home team.



## 2021 Baseball Semi-State Instructions

### TIMETABLE

A daily tournament schedule is available on the KHSAA website and included as a link at the end of these instructions.

Please be familiar with this timetable and adhere to the restrictions that are in place.

On the days of the tournament, the teams may not be on the field except as detailed in the timetable.

There will be no exceptions and schools violating this policy face the possibility of a fine or other punishment permissible by KHSAA Bylaw 27.

It is imperative that the grounds crew has adequate time to perform their functions.

### TOURNAMENT MANAGER DUTIES

#### HOST SITE MANAGER

The KHSAA shall designate a manager for each semi-state game or combination of games.

Game Managers shall work with the host site and Associate Commissioner Cope on details for each semi-state contest.

KHSAA staff shall set the sites and times.

Should the facility provide a turnkey proposal to use its own resources, this would be permitted as an alternative to identifying specific workers and positions.

#### TICKETS AND FAN ADMISSION

All semi-state baseball tickets will be sold online at [khsaatickets.org](http://khsaatickets.org) via GoFan, the KHSAA's official digital ticket vendor.

There shall be no paper tickets sold at the walk-up gate or cash sales.

A link for fans to purchase the digital tickets will be emailed to the Designated Representative of each participating school to be distributed.

All semi-state ticket prices are \$10 each, plus fees.

Children two-and-under will be admitted free, but must still "purchase" the free ticket through GoFan.

Schools should be reminded that this is not a "home" game for either team and as such, the ticketing policies shall be the same for all competing teams.

Coaches' cards and/or officials' ID cards shall not be honored at the gate.

GoFan's training page for buying and validating the tickets is included as a link at the end of these instructions.

#### FINANCIAL REPORTING

Instructions for the completion of the required GE88 Financial Report Form are near the end of these instructions.

Approved expenses are limited to those items contained in these instructions and advance approval from the KHSAA is required before other expenses will be considered.

#### PRE-EVENT

Refer to the KHSAA Handbook to review the rules and regulations governing baseball tournaments and also familiarize yourself with the KHSAA Competition Rules.

Discuss any COVID-19 requirements or adjustments made for the contest with the participating schools.

The Tournament Manager is permitted to hire certain specific positions, with specific maximum allowable rates of pay, to staff the contests, including:

- Tournament Manager (maximum \$125 first game, \$200 for two games);
- Officials Liaison and Manager – (maximum \$35 first game, \$55 for two games);
- Public Address Announcer – (maximum \$35 first game, \$55 for two games);
- Scoreboard Operator – (maximum \$35 first game, \$55 for two games);
- Official Scorer – (maximum \$35 first game, \$55 for two games);
- Statistician, maximum one (1) person per game, if providing complete equipment and service – (maximum \$40 per game);
- Uniform Security at rate agreed by KHSAA prior to contest(s); and





## 2021 Baseball Semi-State Instructions

- Medical / Training Services at rate agreed by KHSAA prior to contest(s)

Costs for these specific permitted workers shall be paid by the KHSAA upon receipt of the completed GE88 Form, which is included as a link at the end of these instructions.

No other payment for workers or other costs can be made without prior authorization from Associate Commissioner Cope.

Should the facility provide a turnkey proposal to use its own resources, this would be permitted as an alternative to identifying specific workers and positions.

Any facility rental fees must be submitted to Associate Commissioner Cope.

### **DURING THE GAMES**

Prior to the start of the contests, the tournament manager shall identify themselves to both participating teams' administrators and the officials and establish a designated area where they can be reached in the event of an emergency.

During your sportsmanship announcements, remind fans that foul language and harassment of officials will not be tolerated and could result in being removed from the stadium.

Have the officials escorted to the locker room and/or parking lot after the game.

### **BYLAW 22 REMINDER**

#### **REQUIREMENT TO ACCOMPANY TEAM MEMBERS**

You are reminded that KHSAA Bylaw 22 requires a principal, coach or another approved individual of the school to be present along with any student-athlete who is representing a member school. A pertinent section of the bylaw is included below.

### **ROSTERS, LIMITATIONS AND SUBSTITUTIONS, TEAM PARTY**

#### **POSTSEASON ROSTERS**

Schools have previously logged into the KHSAA website and designated the postseason roster, which is separate from the regular-season varsity roster.

Roster revisions had to be made before the first date of the postseason when online rosters were closed and considered final.

Only players appearing on the school's postseason roster as of the first date of the postseason are eligible to participate in any round.

The online, postseason roster may be printed from the KHSAA website as the valid listing of available players.

This roster information is also used for advance preparations for state qualifying teams.

#### **LIMITATIONS AND SUBSTITUTIONS**

A school may enter up to 21 players in each postseason game from the roster submitted online.

This cannot be voted on locally to increase the number.

Failure to adhere to this policy will result in penalties permitted within Bylaw 27.

No players other than the 21 designated for each game may be in uniform or participate in warm-up activities.

There may be no additional players added to the roster following the first day of the first week of the district tournament, including for those teams that advance to state.

Substitutions to the 21 that dress may be made, but they must be listed on the postseason roster.

All non-uniformed team members who are not essential to game management shall be seated in the bleachers or general seating and be able to socially distance from other groups.

#### **TEAM ADMISSION AND FIELD AND DUGOUT LIMITATIONS**

The 21 players shall be designated each postseason game from the roster submitted online and no other players may be in uniform.

The Designated Representative for each school will be sent 21 digital complimentary tickets to be redeemed for the student-athlete's entry.

Only the 21 players in uniform for that game and the team's coaches are permitted on the field for warm-ups and infield practice.



## 2021 Baseball Semi-State Instructions

The Tournament Manager at each site may limit the total number of participants in the dugouts which may not exceed thirty 30 for any postseason contest to include all players, coaches and staff.

No Tournament Manager or group of schools may vote to waive these restrictions.

### TEAM PARTY

Participating teams are limited to 14 team-party passes, and only those 14 selected by the head coach may be admitted outside of the players in uniform. Team party includes all superintendents, principals, athletic directors, coaches, non-uniformed players, managers, trainers, statisticians and other adults designated by the school as a member of the traveling party on a daily basis.

The Designated Representative for each school will be sent 14 digital complimentary tickets to be distributed to the team party members.

## VENUE LOGISTICS

### DRESSING/LOCKER ROOMS

There will be no locker room facilities available at the venues.

Teams should be dressed and prepared to play upon arrival.

### PRACTICE

Should you need a practice facility, contact your respective Tournament Manager. Contact info for the managers is included as a link at the end of these instructions.

### HOME AND VISITING TEAM DUGOUTS

The team in the top half of the bracket will be the home team in all games and use the first base dugout.

The team in the bottom half of the bracket will be the visiting team in all games and use the third base dugout.

The home team will wear light-colored jerseys and the visiting team will wear dark-colored jerseys.

A representative of the host site will inspect the dugout before and after each game.

It is expected that dugouts will be left in the same condition as they are found.

There are to be no sunflower seeds on site.

The KHSAA will take whatever action is necessary, including issuing a fine to the particular school and assessing the cost for cleanup, to those schools leaving the dugouts in unsatisfactory condition or damaging any stadium property.

All team members and coaches shall adhere to NFHS playing rules and remain in the dugout unless occupying a fielding position, base, batter's box, on-deck circle, coaching box or warming up in the bullpen.

Each team is expected to help in the retrieval of foul balls down their side to make certain that the best possible balls are being used.

### SIGNAGE, BALLOONS, NOISEMAKERS AND BAND PERFORMANCES

Signs/banners are permitted at the facility but must be of good taste and sportsmanship.

The signs/banners must be handheld.

The signs/banner shall not cover any corporate signage or obstruct the view of patrons.

Amplified noisemakers or items that replicate game management cues are not permitted inside the facility. These items include, but are not limited to: air horns, electronic amplifiers, portable sound systems, instruments that require additional electricity, game clock horns and whistles.

Artificial noisemakers (non-mechanical and non-powered) are permitted provided they do not interfere with game administration, however, the admittance of the items is a venue specific decision.

Balloons, which can block the view of other patrons, are not permitted at the event.

Only venue provided amplified music and band performances are permissible, but only during pregame, natural and planned breaks/timeouts and when the ball is not in play.

The admission of school pep bands is a host site decision.





## 2021 Baseball Semi-State Instructions

### **WATER - COVID-19 GUIDANCE**

Coaches and athletes are reminded to bring their own water bottles and no community dispensers can be used. (REQUIRED)

Refer to the "All Sports Guidance" section of the "Healthy at Sports" document (<https://bit.ly/3hAe1nn>) for multiple references to water, hydration and food guidelines.

### **CONDUCTING THE EVENT**

#### **FORMAT OF EVENT**

The semi-state round is single-elimination and NFHS playing rules will be utilized without exception.

No game shall be started in the postseason after 11 p.m. local time.

#### **FIELD SPECIFICATIONS**

Prepare the facility for tournament play, making sure to use the proper specifications set forth in the National Federation Baseball Rules Book.

#### **REQUIRED BALL TYPE**

Spalding is the official baseball of the KHSAA. For semi-state play, the ball must include the NFHS authenticating mark (this is different from the KHSAA logo) and the NOCSAE mark.

Two (2) cases of Spalding baseballs will be shipped to each host for use during the semi-state games.

Failure to adhere to this policy subjects both the tournament host and site to penalties within Bylaw 27.

#### **CONTEST COMPLETION REMINDERS**

This is a reminder to coaches, officials and administrators in regard to interrupted games.

Postseason games (District, Region, Semi-State and State) must be played to completion or competed per run rule.

All seeded district, district tournament, region tournament, and semi-state/state tournament games will be seven (7) innings unless a run rule is in effect.

If the entire game cannot be played due to weather or other issues, it is a suspended game and shall be completed.

Any completion of a suspended game shall resume at the point of interruption, including substitutions, ejections, etc.

#### **INFIELD PRACTICE**

Teams will be given an 10-minute timed infield prior to their game.

Teams are restricted to their dugout area while the opposing team is taking infield practice.

There will be no infield practice while field maintenance is taking place.

Only the 21 individuals dressed should participate in any on-field warm up/infield.

#### **SPEED-UP RULES - RUN RULES AND COURTESY RUNNERS**

In accordance with National Federation Baseball Rule 4-2-2, the game shall end when the losing team is behind 10 or more runs and has had at least five (5) turns at bat or behind 15 runs after 2 1/2 or three (3) innings per the approved Board of Control experimental rule.

The speed-up rule allowing for a courtesy runner for the pitcher and catcher when they reach base will be used in all postseason games.

#### **PITCHER WARM-UP AREA**

If the pitchers' warm-up area is in live-ball territory, only those individuals specified by NFHS playing rules (pitcher, catcher, personal protector) may be in the area during any warm-up period.

Only members of the team and adult coaches may serve as the personal protector. All persons serving in that role shall wear a properly fitted helmet.



## 2021 Baseball Semi-State Instructions

### PITCH COUNT REGULATION

There will be no adjustment to the pitching limitation as published on the KHSAA website.

The host site is responsible for the designated pitch count recorder. It is advisable that this be the same individual throughout the tournament.

If one is not assigned, then the home team is responsible for tabulating pitches thrown and the unaltered home book shall be considered the official count.

Pitch counts should be verified each half inning as that is the last opportunity to challenge the pitch counts.

Local managers, at the approval of those in the tournament, may choose to make this a paid position (like PA, scorer, gate worker, etc.).

Game totals shall be submitted following the game through the use of GameChanger, as was the practice during the regular season, and may only be altered in the case of documented clerical errors.

Manual pitch count forms may be found at the links below for assistance, as well as at the end of these instructions.

- [BA101 - Pitching Rule Verification](#)
- [BA127 - Pitch County Daily Log Form](#)

### USE OF ELECTRONIC DEVICES

Electronic devices may be used in accordance with NFHS playing rules.

### UMPIRE ASSIGNMENTS AND FEES

Umpires will be assigned by the KHSAA.

Four (4) umpires shall be used for each semi-state game.

The fee for each umpire shall be \$90 with anyone travelling over 100 miles one way receiving an additional \$20.

The umpire rotation is available on the KHSAA website and included as a link at the end of these instructions.

It is requested the host pay the officials through ArbiterPay and be reimbursed by the KHSAA on receipt of Form GE88.

No additional mileage expenses will be added for any official.

### SPORTSMANSHIP

The KHSAA requires officials to enforce sportsmanship rules.

High school athletics emphasize positive values and all parties have worked hard to create a sense of teamwork, respect, responsibility and perspective. We encourage and appreciate your help in letting this competition reflect mutual respect among all participants and officials.

We remind you that officials expect good behavior and will quickly penalize misconduct.

No one outside of the team is to come onto the playing field. Fans are to stay in the stands before, during and after each contest.

Please make announcements to this effect to the student body during the week before play.

In the event this occurs, a school will be fined.

Damage to the facility directly attributed to the fans of a particular school will result in a reduction to team reimbursement as well.

### VENUE SPECIFIC INFORMATION

#### COVID-19 GUIDELINES

The host is responsible for adherence to COVID-19 guidelines in accordance with normal home event procedures.

#### SECURITY



## 2021 Baseball Semi-State Instructions

It is the responsibility of the Tournament Manager and host site to secure adequate police protection and any other security precautions as necessary inside and outside the stadium, in accordance with the security practices policy in the KHSAA handbook. The KHSAA requires a game administrator, other than the coach, at the game site as the coach needs to devote full attention to the team.

Unsporting conduct by spectators is a growing concern and the presence of a contest supervisor sends the message that such behavior will not be tolerated.

### VENUE SAFETY

Persons who attend sporting events may be injured as a result of the risks inherent in being a spectator.

The Game Manager, along with the host site, shall make every effort to ensure that the facility is safe for fans, participants, officials, and others who may attend the contest.

### MEDICAL PROVISIONS

The host site is responsible for securing medical coverage for the event, including athletic trainers and alerting local ambulance service to serve in an on-call status if such cannot be present at the competition site.

It is strongly recommended that the authorized medical coverage be staffed by individuals who can determine whether or not a suspected concussion has occurred per 160.445(3)(a) and the KHSAA Board of Control policies, page 10 of the document.

Any fees associated with providing medical coverage should be reported on the GE88 Financial Report Form.

There is no requirement that an ambulance be on site for all play, however the local administering agency shall be notified in advance and placed "on call" if an ambulance is not available on site.

The KHSAA has long recommended, and continues to recommend, that medical coverage be present at all athletic practices and contests.

Due to the unique skill set of Certified/Licensed Athletic Trainers it is recommended that one of these individuals be present at all practices and contests.

It is also strongly recommended that the member schools utilize only Certified/Licensed Athletic Trainers per the Kentucky Board of Medical Licensure, and not members of any other vocation making this claim but without this legal designation.

While acknowledging the expense of providing a Certified/Licensed Athletic Trainer, it is nonetheless noted that this shall be an integral part of your contest planning process.

### EMERGENCY ACTION PLAN

Each host is expected to have and maintain an emergency action plan that should be distributed to all teams and incorporated into the public address announcer's script.

Emergency action plans shall be practiced and referred to prior to competition.

Before the start of a contest, the tournament manager should identify themselves and establish a designated area where they can be reached in the event of an emergency.

### INCLEMENT WEATHER

It is the duty of the Site Manager, in consultation with the KHSAA and officials, to make decisions in regard to restarting or rescheduling in the event of stoppage or postponement, including ensuring all teams, media outlets and schools are properly notified. It is imperative that Game Managers adhere to the scheduled postseason dates, but inclement weather procedures must be followed.

Competition must be delayed at the first sight of lightning or sound of thunder and the site should be immediately cleared of all persons by event administration.

If it is anticipated that the inclement weather will pass, the competition may be resumed following a 15 minute warm-up period, no sooner than 30 minutes after the last sight of lightning or the last sound of thunder.

If the severe weather is of great length or intensity, the KHSAA, in consultation with the host school, has the responsibility and authority to postpone or cancel the competition.

### HEAT INDEX PROGRAM



## 2021 Baseball Semi-State Instructions

Tournament play will adhere to the KHSAA's Heat Index Program.

Tournament administration will be responsible for tracking and implementing the program's guidelines.

Should the heat index reach 95 degrees, mandatory 10-minute water breaks will be given every 30 minutes.

At 99 degrees, play shall stop, and the heat index will be monitored every 30 minutes.

### **VIDEOTAPING, MEDIA AND INTELLECTUAL PROPERTY RIGHTS**

#### **SCHOOL MEDIA CREDENTIALS**

Each school is permitted one (1) school media pass at KHSAA State Championship events, valid only for a student or full-time school employee, for the sole purpose of reporting the events for school internal publications.

Outside entities such as professional photographers, videographers or parents may not utilize the school media pass.

The school media pass may not be used for taking pictures that will later be sold as these individuals need to apply for a freelance/commercial photographer pass and pay the requisite fee.

This pass must be requested in advance of the start of the event through the online system using Form SI103 which is included as a link at the end of these instructions.

#### **TRADITIONAL MEDIA CREDENTIALS**

Traditional media members (print, TV, radio, online) interested in covering KHSAA State Championship events should apply for credentials through the KHSAA's online system. A link to the credential application is included at the end of these instructions.

The deadline to apply is Wednesday, June 9 at 5 p.m. ET.

Applications should be submitted by the editor or director at each organization.

Complete information should be submitted for all attendees (including unique email addresses and cell phone numbers), as the KHSAA will use these methods to communicate information surrounding the event.

**Media outlets will be limited to three (3) credentials.**

Freelance/commercial photographers, as defined herein, will not be granted access to KHSAA events unless the requisite media rights fee is paid.

**Media members will follow all local/state/federal requirements when it comes to PPE, health screening, physical distancing, capacity, etc.**

KHSAA Media policies are outlined online at - <https://khsaa.org/news-stats-pubs/media-resources/media-credentials/>

#### **GENERAL MEDIA RIGHTS**

At all levels of competition during postseason play, control of media access and location at those contests is with the KHSAA, and as such, there are necessary policies and restrictions concerning this event and these provisions will be vigorously enforced.

The intellectual property, corporate, broadcasting and media rights to all postseason rounds belong exclusively to the KHSAA, including titling agreements and sponsorships.

Control of media access and location at all levels of postseason play is with the KHSAA.

In general, management of the execution of those assignments is assigned to the host KHSAA school's game manager.

No member school can sign an exclusive agreement for a postseason round (district, region, section, semi-state, quarterfinal) without agreement between the schools and approval from the KHSAA, including full compliance with NFHS Network restrictions and the KHSAA's participation within that network.

At all levels of KHSAA sponsored postseason events, including district, regional, semi-state, quarterfinal and state competition, managers shall make allowances for television media to record video of the contests, without play by play, at no charge as long as the sole purpose is for newscast highlights.

At all levels of KHSAA sponsored postseason events, including district, regional, semi-state, quarterfinal and state competition, managers are encouraged to make allowances for other media outlets to be admitted to the contests as long as the sole purpose is for reporting of the actions taking place at the contest and promoting the event.

Participating teams in KHSAA events shall be allowed to record the contest, for coaching purposes only, if space is available with such availability at the discretion of the tournament manager and may be required to sign a waiver indicating that the KHSAA shall be held blameless for any and all liability to those parties involved in the video recording.



## 2021 Baseball Semi-State Instructions

Any video recording must not violate existing, acknowledged, written copyright protection or intellectual property agreements and cannot be broadcast in any form, including internet and social media.

If space is deemed available, the tournament manager has the right to designate a specific area for video recording and no video recording will be allowed outside of that area.

The determination of space availability is solely with the tournament manager and shall be equitable for all teams.

Freelance/commercial photographers, as defined herein, will not be granted access to KHSAA events unless the requisite media rights fee is paid.

A commercial photographer is any person, including a school employee, who will capture images from the event and re-sell them to anyone, including team members, the families or the general public.

### **RADIO BROADCASTS**

No host manager of a semi-state round or school may approve a live broadcast (radio or online) of a contest, such requests shall be referred to the Communications Director of the KHSAA.

A broadcast, as used in these instructions, is a non-video, audio only, live or delayed account, including play by play, of any contest.

A rights fee is to be charged to a radio station broadcast team (radio or online) or outlet (radio or online) broadcasting the event.

The mandated minimum fee schedule will be published annually by the Commissioner's office on the KHSAA website.

### **MEDIA RIGHTS FEE**

Freelance/commercial photographers as defined in these instructions and radio stations interested in originating a broadcast of a KHSAA State Tournament event are subject to a media rights fee.

Information regarding the fee for each event is available through the online credentialing system.

### **TELECAST/WEBCAST INCLUDING NFHS NETWORK RESTRICTIONS**

The KHSAA is a full member of the NFHS Network and as such, restrictions exist on all postseason levels.

A telecast, as used in these instructions, is a video, live or delayed account, including play by play, of any contest over the air.

A webcast, as used in these instructions, is a video, live or delayed account, including play by play, of any contest distributed using the internet.

For district and region play, a fee schedule shall be approved annually by the Commissioner for any telecast/webcast and only those outlets paying such fee in advance shall be permitted to originate a telecast or webcast.

For district and region play in all KHSAA sports, a majority vote of the participating schools may set a higher fee than the required minimum and such vote may also recommend to the KHSAA that no broadcast be approved.

Any approved webcast (or telecast simulcast on a website) shall require the originator to provide a link to the telecast/website not less than 24 hours prior to the origination of the contest, and such link shall permit the Association to add the content to the NFHS Network menu of contests.

Failure of any approved webcast (or telecast simulcast on a website) to provide a link for inclusion on the NFHS Network will result in denial of approval.

The KHSAA is the only entity permitted to produce live or delayed video from state championship events including semi-state, quarterfinal and state rounds, and is the sole authority for approval of any other.

No entity, unless given prior approval by the KHSAA shall be permitted to produce video telecasts or broadcasts, with the exception of approved media outlets solely recording highlights for news use.

No host manager or school may approve live webcast or telecast of a contest, such requests shall be referred to Communications Director of the KHSAA.

No entity, including media members, may stream live video content during postseason events including the use of social media products such as Facebook® Live and Periscope (via Twitter®).

The mandated minimum fee schedule will be published annually by the Commissioner's office on the KHSAA website.

For all postseason play, all questions regarding live or delayed broadcast or telecast policies, including requests for approval shall be referred to the Communications Director for approval by the Commissioner.

### **BASEBALL MEDIA AREA**



## 2021 Baseball Semi-State Instructions

Game management may designate a media area, but not in a live-ball area.

Dead-ball territory does not include the team dugouts, as media members are not permitted inside them.

### MUSIC COPYRIGHT

KHSAA schools are reminded to adhere to all music copyright laws.

### EVENT MERCHANDISE

KHSAA State Championship apparel will be available for sale on-site and online at the following link - <https://bit.ly/3g9EZ2Z>.

Event merchandise will be shipped to each semi-state manager. Each manager should secure an individual to execute the set-up and sale of the merchandise.

TeamIP is the exclusive vendor of championship apparel.

No outside merchandise representative of the event may be produced by any other entity and sold or distributed at the championship venue.

### POST EVENT

#### REPORTING RESULTS

Upon completion, Tournament Managers are to report scores by calling the Rihards.com/KHSAA Scoreboard at 1-800-453-6882 or via web link if provided by email.

Failure to report the results could result in a fine to the host school.

#### TROPHIES AND AWARDS

No trophies will be awarded during the semi-state rounds.

#### FINANCIAL REPORT FORM (GE88)

Each Tournament Manager is to complete and submit Form GE88 (Semi-State Game Financial Report) to the KHSAA, including itemized expenses, within one (1) week of the tournament using the link at the end of these instructions.

No expense item may be listed on the form without prior approval from the KHSAA and Game Managers are reminded not to pay any team's expenses or officials.

Officials should be paid via ArbiterPay and the amounts reported through Form GE88.

Upon receipt of Form GE88, the KHSAA will send checks to the permitted game staff, whose names, email addresses and current mailing addresses must be included for each worker.

#### EXPENSE REIMBURSEMENT

At this time, there are no reimbursements planned for travel that will be distributed to participating schools in KHSAA championship events for the 2020-2021 school year.

### INSTRUCTIONS FOR TEAMS ADVANCING

The eight (8) winning teams advance to the state baseball tournament quarterfinals on June 16-17 at Legends Field in Lexington.

State Tournament instructions for participants and fans will be released for those advancing.

Please be on the lookout for those should your school advance.

Teams advancing will be sent detailed instructions for joining a web conference prior to the state tournament.

#### TEAM INFORMATION FORM (GE63)

By Monday, June 14, the Athletic Director or Designated Representative from all teams advancing to the quarterfinals must submit form GE63 (Team Information Form), which is included as a link at the end of these instructions.

### IMPORTANT WEBSITE LINKS

- [KHSAA Baseball Site](#)





## 2021 Baseball Semi-State Instructions

- [Healthy at Sports, Stage 3 - Performance, Return to Competition: Considerations for Spring Sports and Sport-Activities - Baseball](#)
- [COVID-19 Media Guidance](#)
- [SI115 - Spring KHSAA Championship Media Credentials](#)
- [SI103 \(School Media Credential Request Form\)](#)
- [Competition Rules](#)
- [Semi-State Pairings and Rotation](#)
- [Semi-State Umpire Rotation](#)
- [BA101 - Pitching Rule Verification](#)
- [BA127 - Pitch County Daily Log Form](#)
- [GE63 - Team Information Form](#)
- [GE88 - Semi-State Financial Report](#)
- [GE93 - Semi-State Tournament Manager Form](#)
- [Heat Index Program](#)
- [GoFan Ticket Training](#)