



HEALTHY AT SPORTS

**STAGE 3 - PERFORMANCE
RETURN TO COMPETITION:
CONSIDERATIONS FOR
FALL SPORTS**



**2020-21 Healthy at Sports
Stage 3- Performance
Return to Competition: Individual
Sport Considerations**

CROSS COUNTRY

Staff Contact:
Sarah Bridenbaugh

CROSS COUNTRY SPECIFIC GUIDANCE

CROSS-REFERENCE TO OTHER GUIDANCE

- While this section deals with sports-specific guidance, all involved in the athletic program are expected to reference all guidance standards, including the many that may be non-sports specific.
- Guidance is broken into three areas:
 - REQUIRED- These standards are required at all sanctioned contests.
 - RECOMMENDED- These standards are best practices during all contests during the pandemic and are therefore recommended for all contests.
 - CONSIDER- While these items are also best practices during this time, local site discretion should be exercised to determine if these items are practical and feasible for use at the contest.
- These differences in the guidance are necessitated by the differences in sports, facilities, and geographic areas, differences which are pronounced during normal years, and magnified this school year.

SEASON LIMITATION AND CONTEST ADJUSTMENTS (ADOPTED FOR 2020-21 AND REQUIRED)

SEGMENTS AND SEASON LIMITATIONS

- Segment 1 refers to competition from September 7 to September 26; Segment 2 refers to competition from September 28 to October 9, and Segment 3 refers to competition from October 10 to the end of the regular season.
- The first official practice can be held on August 24.
- Intra-squad scrimmaging may be conducted on the first day of practice.
- For 2020, no scrimmages will be permitted before the start of the first contest of the season or following the first official race.
- The first official contest can be held on September 7.
- The limit of races for the season (not including postseason) is 9 with no more than two (2) races in a given week.
- The last official regular season contest can be held on October 17 or the day before the region.
- Postseason play, at this time, is scheduled to begin October 19 with championship play currently scheduled to end the week of October 26.
- All teams eliminated would be permitted to play additional contests before the week of the state championship provided teams don't exceed the contest limit.

MEET ENTRY AND COMPETITOR LIMITATIONS (ADOPTED FOR 2020-21 AND RECOMMENDED FOR ALL COMPETITION DURING THE SEGMENTS)

- Segment 1: *September 7 - 26:
 - Limit overall race to 100 runners with no more than 40 per wave/staggered start.
 - Recommend races not exceed 2500m, entrants notified of distance prior.
 - No more than two (2) races per division (recommend one of each gender).
- Segment 2: *September 28 - October 9.
 - Limit overall race limitations to 180 runners with no more than 45 per wave/staggered start.
 - Recommend races to not exceed 3500m, entrants notified of distance prior.
 - No more than two (2) races per division (recommend one of each gender).
- Segment 3: *October 10 – end of the regular season:
 - Limit overall race limitations to 250 runners with no more than 100 per wave/staggered start.



**2020-21 Healthy at Sports
Stage 3- Performance
Return to Competition: Individual
Sport Considerations**

CROSS COUNTRY

Staff Contact:
Sarah Bridenbaugh

- Recommend races to not exceed 5000m, entrants notified of distance prior.

ADMINISTRATIVE AND FIELD/COURT/COURSE SETUP

PRE-MEET

- Team Packets: Meet managers are encouraged to transmit as much information as possible electronically before the meet. (RECOMMENDED)
- For any information that cannot be submitted electronically, organize a method for the packet pick up that keeps coaches socially distanced (i.e. time slots for small numbers of coaches to pick up packets, marks on the ground that are 6 feet apart for coaches' lines formed at packet pick-up, etc.). (RECOMMENDED)
- Temporary restroom facilities may be used following the guidelines provided by the venue's local health department or other applicable guidelines. (CONSIDER)
- Restrooms should be cleaned and disinfected frequently. (CONSIDER)
- The use of team tents on site is strongly discouraged, instead utilize an option for open-air tarps and space markers. (RECOMMENDED)
- Team entry is not to exceed 10 runners, the current postseason roster limitation. Additional runners may be allowed depending upon the decisions of meet management and within overall meet limits during the current segment. (REQUIRED)
- Meet managers are reminded that in any meet with four (4) or fewer schools, a licensed official is not required to officiate the meet.

COURSE SETUP

- Schools shall widen the starting line and each starting box. (REQUIRED)
- Each starting box shall be a minimum of 6 feet apart. (REQUIRED)
- Each starting box shall have no more than one (1) school per box (also following the segment limitations). (REQUIRED)
- Additional flagging, paint, etc. shall be used in areas on the course where spectators could get within 6 feet of runners as they spectate/cheer to keep those spectators at least 6 feet back from runners. (REQUIRED)
- Use finish corrals and FAT timing for larger meets as easier to social distance at the finish. (REQUIRED)
- Strongly consider a corral director to supervise the finish corral and assist in distancing finishers (CONSIDER)
- If no FAT timing system is available for smaller meets, use alternative means of finish place and time to reduce congestion at the finish line. (RECOMMENDED)
- If sticks are used for determining place, disposable sticks are recommended by race. (RECOMMENDED)
- Rule 8-1-3a: Consider widening the course to at least 6 feet at its narrowest point. (RECOMMENDED WHERE FEASIBLE)

WAVE/STAGGERED STARTS

- Any grouping, staggering or wave starts would need to be coordinated with the finish timer to ensure proper timing of runners. (RECOMMENDED)
- FAT timing and the use of a video camera for finishes would be key in determining proper placement and times of competitors. Examples of wave starts include starts by school (all entries from one school start at a specific time), random grouping, seeded grouping, etc. (RECOMMENDED)

CONDUCT OF RACES

- Numbers written on athletes are not permitted. (Other forms of timing/results should be considered i.e. coaches hand timing, bib chips, shoe chips, camera finish, etc.) (REQUIRED)
- No items (water bottles, clothing, etc.) are to be left at the starting line. (REQUIRED)



**2020-21 Healthy at Sports
Stage 3- Performance
Return to Competition: Individual
Sport Considerations**

CROSS COUNTRY

Staff Contact:
Sarah Bridenbaugh

- Schools are strongly encouraged to not allow coaches on the course. (RECOMMENDED)
- If separate sessions/divisions are being held, there is to be an hour between sessions to allow for crowd egress (if permitted) and allow for sanitization of equipment and restrooms. (RECOMMENDED)
- If spectators are allowed, there must be a restricted area at the finish that keeps spectators away so they do not interfere with the "quick exit" of each athlete. (REQUIRED)
- Creative finish line options are strongly encouraged to maintain physical distancing. Some examples include: (RECOMMENDED FOR ANY RACE >2.5K)
 - a) an open finish corral which allows runners to immediately exit the finish area; (RECOMMENDED FOR ANY RACE >2.5K)
 - b) multiple or separate finish lines for teams could be considered as an alternative to the traditional finish line for all, (RECOMMENDED FOR ANY RACE >2.5K) and
 - c) if shoe chips are used, then the coach of each school shall collect and return their chips. There shall be no chip removal/retrieval near the finish line. (REQUIRED FOR ANY RACE >2.5K)
- Consider using image-based equipment at the finish line to assist with picking the place and reducing congestion. (RECOMMENDED)

PRE AND POST RACE

- Athletes shall wear masks/face coverings in the team staging area, corral, and until the start of the race. (REQUIRED)
- Runners may remove their mask/face covering when called to the starting line by the starter, but the mask/face covering should not be discarded. (REQUIRED)
- Establish social distancing protocols for pre and post-contest activities. (REQUIRED)
- The pre-contest meeting is limited to one coach from each team. (REQUIRED)
- Distribute awards in envelopes and have the coaches pick them up, one at a time, after the contest. (REQUIRED)
- Mass awards ceremonies shall be eliminated. (REQUIRED)
- Meet results shall not be posted at a venue. All results to be posted online, sent by email, and/or mail. (REQUIRED)

OFFICIATING (MECHANICS) (ADOPTED FOR 2020-21)

- It is strongly recommended that starters utilize their own starter pistol or electronic starting device; or if he/she uses starting equipment owned by the school, it should be sanitized before the first use, and following any use of the equipment by any other person.
- Officials shall follow all social distancing guidelines (pre and post-meet conferences, clerking at the start line, tabulations, etc.).
- Rule 8-4-5: Clerking shall be done at the starting line to avoid congestion.
- Rule 8-4-3: Only the referee shall attend the pre-meet meeting (without the presence of the starter or captains).
 - The meeting (if it cannot be held virtually ahead of time) shall be limited to a single coach from each team, and multiple meetings may be needed to ensure proper physical distancing is maintained.

OFFICIATING (RULES) (ADOPTED FOR 2020-21)

- Rule 8-3: Staggered, wave, or interval starts are permitted.
- Rule 4-3: Athletes are permitted to wear gloves and/or masks/face coverings during competition with no restriction on color or type.



**2020-21 Healthy at Sports
Stage 3- Performance
Return to Competition: Individual
Sport Considerations**

**ALL SPORTS
GUIDANCE**

ALL SPORTS GUIDANCE

INTRODUCTION

FROM THE COMMISSIONER

At the Kentucky High School Athletic Association, we are aware that we are at the confluence of dual health crises. Since the day we moved our basketball tournaments out of Rupp Arena (March 12), I and the entire staff of the Association, along with the complete support of our Board of Control, have worked to try and navigate these multiple health crises in our country. These crises include both the global pandemic related to the novel Coronavirus, COVID-19, and mental health situations, including depression and suicide which are so prevalent in school-aged children these last few months.

We have received continual feedback from our member schools, the related school districts, and our Sports Medicine Advisory Committee from the Kentucky Medical Association, and have worked continually with Governor Beshear's and Lt. Governor Coleman's offices, the Kentucky Department of Education, a host of "K" groups from around the Commonwealth and a host of others to guide our member schools back to healthy sports participation during the COVID-19 pandemic.

We will continue to navigate these uncharted waters, ready to pivot and change course at a moment's notice as we all work through the first truly global pandemic in more than 100 years. This plan has been reviewed in its entirety by the Kentucky Department for Public Health and as has been the case since March, this relationship will continue to assist in developing the best opportunities for sports and sport-activities to exist with the given circumstances.

The KHSAA believes it is essential to the physical and mental well-being of student-athletes to return to organized physical activity and build team relationships with their peers and coaches. Students who participate in our offerings learn life lessons in an environment that cannot be duplicated. Academic achievement, the development of leadership, and social skills as well as the mental health benefits are known to be greatly enhanced in students who participate in these programs compared to those who do not. There is no doubt that the COVID-19 coronavirus pandemic has already resulted in thousands of our students missing out on these life-shaping educational experiences over the past several months. A study conducted by UW Health & the University of Wisconsin (<https://bit.ly/31wA45W>) concluded that more than two-thirds of high school athletes report anxiety and depression since the onset of the pandemic. Another report measured the impact of School Closures and Athletic Cancellations on the health of Indiana adolescents (<https://bit.ly/3hxGG9M>). These studies are not alone in their conclusions.

The KHSAA fully supports its member schools in determining what is in the best interests of the health and well-being of their student-athletes and staff. Each KHSAA member school's athletic department will operate with the approval of its school administration and in consultation with its local health department in moving forward throughout the 2020-21 school year. Each local school district will decide to determine if they can safely conduct athletic practices and contests.

As is detailed in this manual, due to the nature of the outbreak, there may be inequities due to geography within the state of Kentucky as some areas will have higher COVID-19 rates that may not warrant full athletic participation while another area has lower COVID-19 rates that allow full participation.

For interscholastic athletics to continue, including workouts, practices, and competitions, social distancing and other preventive measures such as universal masks/face coverings, frequent sanitizing of hands, implements, and equipment must occur. Also, frequent hand washing per CDC standards must be emphasized by everyone involved, and aggressive efforts emphasizing compliance with all of these standards. Also, consideration must be given to an aggressive testing protocol and refinement of existing emergency plans.



2020-21 Healthy at Sports Stage 3- Performance Return to Competition: Individual Sport Considerations

ALL SPORTS GUIDANCE

These actions and policies will likely remain in place until a cure, vaccine or very effective treatment is readily available, or so-called “herd immunity” is confidently reached. As the science about COVID-19 evolves, it will be important to remain vigilant and nimble to respond to new developments. Students and their families, along with school personnel, must recognize these risks and implement best practices to reasonably mitigate them. Participation in school activities is voluntary and every individual will need to evaluate the risks versus the benefits of athletics participation. Those immune-compromised students and staff, or those who live with family members with elevated health concerns, should evaluate associated risks of participation and may choose not to participate.

According to the Center for Disease Control and Prevention (CDC), the virus that causes COVID-19 is thought to spread primarily from person-to-person, mainly through respiratory droplets produced when an infected person coughs, sneezes or talks, and may also be produced when yelling, cheering, singing and spitting. However, new data is available daily and the best scientific minds in the country and the world are working on solving the problem. It is thought by our medical advisors that these droplets can land in the mouths or noses of people who are nearby or possibly be inhaled into the lungs. Spread is more likely when people are in close contact with one another (within about six feet) for the times specified by the CDC. Risk mitigation strategies should be aimed at reducing the likelihood of a person being exposed to respiratory droplets coming from another person. Every school is different, and every athletic activity is different. Certain mitigation strategies may be feasible in one school or for one activity, but not another.

We are also providing sport-specific recommendations and/or considerations that our team has developed in conjunction with the National Federation of State High School Associations (NFHS) or a similar governing body. These documents have been shared with member school administrators. Note that a rule modification is a modification to a playing rule from the governing body of the sport and will be applied to all contests for the 2021-21 season.

Best of luck as we all work through this time together. Julian Tackett, Commissioner, and the KHSAA staff.

DOCUMENT VERSIONING

- Original Version Issued, 8/25/20
- Revised Following Additional Health Considerations and distributed to the membership, 8/31/20
- Clarification on Masks/Face Coverings for Medical Waivers Revised to match school day guidance and technical clarifications including session time limitations, 9/5/20.
- Additional Information on Basketball, Cheer, and Dance added to guidance along with Mask cleaning/changing recommendations, 9/19/20.

GENERAL GUIDANCE INFORMATION

- Guidance is broken into three areas:
 - REQUIRED- These standards are required at all sanctioned contests.
 - RECOMMENDED- These standards are best practices during all contests during the pandemic and are therefore recommended for all contests.
 - CONSIDER- While these items are also best practices during this time, local site discretion should be exercised to determine if these items are practical and feasible for use at the contest.
- These differences in the guidance are necessitated by the differences in sports, facilities, and geographic areas, which are pronounced during normal years, and magnified this school year.
- Due to the nature of the outbreak, there may be inequities (perceived and real) due to geography within the state as some areas will have higher COVID-19 rates than other areas. As such, each school must make a continual evaluation regarding participation.



2020-21 Healthy at Sports Stage 3- Performance Return to Competition: Individual Sport Considerations

ALL SPORTS GUIDANCE

- For workouts, practices, and competitions to continue, social distancing and other preventive measures such as mask/face covering and frequent sanitizing of hands, implements, and equipment must continue.
- These restrictions and this guidance will likely remain in place until a cure, vaccine or very effective treatment is readily available, or so-called “herd immunity” is confidently reached and the national and Commonwealth states of emergency are canceled.
- As the science about COVID-19 evolves, it will be important to remain vigilant and nimble to respond to new developments.
- Specific items related to contest officials are located in the section of the document labeled “Return to Competition: A Return to Officiating”.
- Students and their families, along with school personnel, must recognize these risks and implement best practices to reasonably mitigate them.
- Participation in school activities is voluntary and is a privilege, not a guaranteed right.
- Student-athletes and their families must complete a GE04 form which stipulates to the acknowledgment of the risk of participation.
- Every individual will need to evaluate the risks versus the benefits of athletics participation.
- Those immune-compromised students and staff as well as attendees, or those who live with family members with elevated health concerns, should evaluate associated risks of participation and may choose not to participate.

INFORMATION SOURCES

- As used in this guidance, the following groups have either supplied information or been used as a resource in the development of the document.
- CDC (Centers for Disease County)
- KDE (Kentucky Department of Education)
- KMA SMAC (Kentucky Medical Association Committee on the Medical Aspects of Sports)
- KMEA (Kentucky Music Educators Association)
- KDPH (Kentucky Department for Public Health)
- KHSAA (Kentucky High School Athletic Association)
- NFHS SMAC (National Federation of High Schools Sports Medicine Advisory Committee)

EDUCATION AND INFORMATION

- Before beginning any athletic activities, the local school (system) should review the most recent guidelines provided by the groups listed in the “INFORMATION SOURCES” section of this document, along with constant consultation with local county/city health agencies, and decide how best to implement those guidelines.
- Local school administration should communicate to coaches, student-athletes, and parents, CDC, KDPH, KDE, KHSAA, and local county/city health department guidelines and best practices regarding COVID-19 and discuss all safety and cleanliness expectations.
- As a reminder, which has been distributed to coaches, all coaches SHALL complete the new, free NFHS Learn elective course “COVID-19 for Coaches and Administrators” that may be found at www.nfhslearn.com.
- The NFHS SMAC has divided interscholastic sports into three risk categories:
 - Higher Risk: Sports that involve close, sustained contact between participants, lack of significant protective barriers, and high probability that respiratory particles will be transmitted between participants. Examples: Wrestling, football, boys lacrosse, competitive cheer, dance
 - Moderate Risk: Sports that involve close, sustained contact, but with protective equipment in place that may reduce the likelihood of respiratory particle transmission



**2020-21 Healthy at Sports
Stage 3- Performance
Return to Competition: Individual
Sport Considerations**

**ALL SPORTS
GUIDANCE**

between participants OR intermittent close contact OR group sports OR sports that use equipment that can't be cleaned between participants. Examples: Basketball, volleyball*, baseball*, softball*, soccer, water polo, gymnastics* (if equipment can't be sufficiently cleaned between competitors), ice hockey, field hockey, tennis*, swimming relays, pole vault*, high jump*, long jump*, girls lacrosse, crew with two or more rowers in shell, 7 on 7 football

- *Could potentially be considered "Lower Risk" with appropriate cleaning of equipment or use of masks by participants
- Lower Risk: Sports that can be done with social distancing or individually with no sharing of equipment or the ability to clean the equipment between use by competitors. Examples: Individual running events, throwing events (javelin, shot put, discus), individual swimming, golf, weightlifting, alpine skiing, sideline cheer, single sculling, cross country running (with staggered starts)

COMPLIANCE STANDARD AND EXPECTATIONS

- These guidelines represent additional policies and interpretations per the Constitution of the KHSAA. Member schools, through the membership process and form, have agreed to abide by those policies as attested to in the membership application, including:
 - The school is a voluntary member of the KHSAA and follows the KHSAA Constitution, Bylaws, Competition Rules and all other policies and directives of the KHSAA Commissioner or Board of Control;
 - The Principal/Designated Representative has read, understood and agrees to abide by the KHSAA Constitution, Bylaws, Competition Rules, Due Process Procedure and all other policies of the KHSAA Commissioner or Board of Control as now enacted or later amended;
 - The school will abide by all of the rulings and directives of the KHSAA Commissioner, Assistant Commissioners, Hearing Officer and Board of Control, and at all times act in the best interests of the KHSAA;
 - The school will self-report all violations of the KHSAA Constitution, Bylaws, Competition Rules, Due Process Procedure or all other policies and directives of the KHSAA Commissioner or Board of Control, and any ruling by the KHSAA and its Commissioner, Assistant Commissioners, Hearing Officer or Board of Control;
 - The KHSAA may impose penalties as detailed in the Bylaws of the KHSAA against a member school for violation of the KHSAA Constitution, Bylaws, Competition Rules, Due Process Procedure or all other policies and directives of the KHSAA Commissioner or Board of Control, and said school agrees to timely adhere to and abide by all penalties assessed against this school under the Bylaws of the KHSAA or any other rule, regulation or policy;
 - The school will comply with the principles of institutional control as defined within the Bylaws of the KHSAA and the KHSAA's published interpretations thereof.
- As such, these policies during this time of the global pandemic, are binding on all member schools; and cooperative application of the standards is the primary way our members have of restarting interscholastic activity.
- Failure to adhere to the requirements contained in these standards shall be cause for a finding of a lack of institutional control and penalized per Bylaw 27 including game forfeiture, fine or other penalties, suspension of an individual team, program, or member school.



**2020-21 Healthy at Sports
Stage 3- Performance
Return to Competition: Individual
Sport Considerations**

**ALL SPORTS
GUIDANCE**

SCREENING OF ALL ENTERING THE FACILITY FOR PRACTICE OR COMPETITION

- All should be mindful that participation in sports is a privilege and not a right, as is attendance at such an event.
- Local school/school systems shall develop a protocol after consultation with local health officials, for checking the temperature and health of all individuals. (REQUIRED)
- A standard checklist form is available for use by member schools, however, a school developed list, health department developed list, or electronic equivalent may be used. (RECOMMENDED)
- Anyone attending or participating in a KHSAA regular season or postseason event shall review his/her symptoms before arriving in anticipation of being screened. (REQUIRED)
- Gate attendees shall be prepared to check the temperature of any individual who was not checked that day by the school. (REQUIRED)
- The current protocol permits accepting a temperature of 100.4F or less. (REQUIRED)
- Consider the potential for environmental factors to cause an elevated temperature and should the temperature be elevated, it is appropriate to isolate the individual and recheck the temperature after 5-to-10 minutes of sitting in a cooler environment. (RECOMMENDED)
- In the event a person does not meet the temperature threshold, that individual shall not be admitted to the facility and standard procedures for a symptomatic individual shall be implemented. (REQUIRED)
- A standard COVID-19 symptom checklist shall be reviewed with all who enter (REQUIRED)
- The name and contact information should be recorded at each practice (REQUIRED)
- The name and contact information should be recorded where feasible and practical at competitions (REQUIRED)
- Currently, the known symptoms which shall be addressed are as follows, but may be subject to future revision and notification (see updates at <https://bit.ly/3gqqMgn>): (REQUIRED)
 - Fever or chills
 - Cough
 - Shortness of breath or difficulty breathing
 - Fatigue
 - Muscle or body aches
 - Headache
 - New loss of taste or smell
 - Sore throat
 - Congestion or runny nose
 - Nausea or vomiting
 - Diarrhea
- This list does not include all possible symptoms. The CDC will continue to update this list as more is learned about COVID-19. A current list of COVID-19 symptoms and a “self-checker” application is available at <https://bit.ly/3gqqMgn> (RECOMMENDED)
- Note that due to the variability and potential unreliability of temperature checks, schools should give more consideration to symptom check. (CONSIDER)
- Spectators, participants, or personnel displaying COVID-19 symptoms (e.g., fever, cough, or shortness of breath), or with temperatures of greater than 100.4F shall not be admitted and must stay home and consider COVID-19 testing if symptoms persist. (REQUIRED)
- For students failing the health check, a standard protocol shall be implemented as with all school procedures. (REQUIRED)
- Any individual who fails a screening, either based on symptoms or temperature level, shall also wear a mask/face covering and be sent immediately to a designated area for isolation, and the school emergency action plan shall be implemented. (REQUIRED)



**2020-21 Healthy at Sports
Stage 3- Performance
Return to Competition: Individual
Sport Considerations**

**ALL SPORTS
GUIDANCE**

- Anyone who stays with, or cares for, the potentially infected person while in the isolation area shall wear a mask/face covering. (REQUIRED)
- A determination should be made about whether the individual's symptoms dictate that they contact their healthcare provider or go to an emergency room. (RECOMMENDED)
- Any individual, student-athlete, coach, athletic trainer, support staff, or official exhibiting signs of COVID-19 shall be tested before returning to participate in contests and consult with their healthcare provider. (REQUIRED)
- Before returning to play, the individual must meet CDC's criteria for "When You Can Be Around Others After You Had or Likely Had COVID-19 (<https://bit.ly/32prkOB>). (HIGHLY RECOMMENDED)
- A member of the traveling staff that is away and has a positive screen should be cleared by the team physician or the representative health care provider to travel safely, ideally by themselves, but if not possible or determined by the medical staff to be unsafe to travel by themselves, they should travel with another member of the staff where both are masked. (RECOMMENDED)

MASS TEAM TESTING FOR COVID-19

- Interscholastic athletics is a privilege, not a right, as has been confirmed by the courts on multiple occasions.
- As a privilege, a member school may require additional steps for participation to occur such as a higher grade achievement requirement, less tolerance for attendance issues, a parental and student risk acknowledgment and permission form, and a variety of other required thresholds.
- As a privilege, students and their families agree to comply with these and other restrictions as a condition of participation.
- Frequent testing of asymptomatic athletes is a major component of all professional and many collegiate return-to-play plans.
- Larger, well-funded schools at the collegiate level (particularly the Power-5 league members of the ACC, Big-10, Big-12, Pac-12, and SEC) have recommended a multi-tiered testing process that has evolved to multiple tests per week.
- Recently the FDA has approved saliva-based testing as an alternative to more expensive and slower-result testing systems, but it will take time for distribution (see <https://bit.ly/31tpdtP>).
- Students who refuse to participate in an adopted screening program should be determined to have voluntarily given up the privilege of participation.
- The NFHS SMAC does not at this time recommend testing of asymptomatic high school athletes, however in Kentucky, part of the tremendous success in twice "flattening a curve" epidemiologically has been our access to no-cost testing regardless of symptoms.
- Per the NFHS SMAC in its August 2020 report, while a comprehensive multiple times-per-week testing program at the high school level is likely cost-prohibitive and raises concerns regarding the proper allocation of resources during the pandemic, each member school should strongly consider the adoption of screening protocol and any additional steps necessary to protect the student and the student body during this pandemic. (RECOMMENDED).
- With the privilege aspect in mind, school districts are recommended to establish COVID-19 testing protocols, even if those protocols necessarily are different from the typical student and even if non-congruent with other schools or other school activities. (RECOMMENDED)
- Schools should be prepared to alter and adjust any testing or prevention protocol based on changes in data throughout the state as well as locally. (RECOMMENDED)

COVID-19 BASIC DEFINITIONS – ISOLATION AND QUARANTINE

- Isolation and quarantine help protect the public by preventing exposure to people who have or may have a contagious disease.



**2020-21 Healthy at Sports
Stage 3- Performance
Return to Competition: Individual
Sport Considerations**

**ALL SPORTS
GUIDANCE**

- Isolation separates sick people with a contagious disease from people who are not sick.
- Quarantine separates and restricts the movement of people who were exposed to a contagious disease to see if they become sick.

PROTOCOL FOR SUSPECTED CASES OF COVID-19

- All schools shall have an emergency action plan in place for each site per KRS 160.445. If a student, coach, or official is, or becomes, sick on-site with symptoms of COVID-19, they shall be placed in an identified and designated quarantine area with a mask in place until they can be picked up. (REQUIRED)
- Staff who are identified to care for students must wear a mask. (REQUIRED)
- Students, coaches, and/or officials should be transported by their parent or guardian, emergency contact, or ambulance (if clinically unstable) for off-site testing. (RECOMMENDED)
- If an ambulance is called, or someone is being brought to the hospital, there shall be an attempt to call the hospital first to alert them that the person may have COVID-19. (REQUIRED)
- If a student, coach, or official becomes sick, they must not use group transportation to return home. (REQUIRED)

PROTOCOL FOR POSITIVE CASES OF COVID-19

- The local health department shall be contacted by the school for further direction and they will likely initiate contact tracing, following regular public health practices. (REQUIRED)
- All schools, public and private, must cooperate with the local public health department if a confirmed case of COVID-19 is identified, and collect the contact information for any close contacts (i.e., individuals less than six feet apart for more than 15 minutes) of the infected individual from two days before he or she showed symptoms to the time when he or she was last at the event. (REQUIRED)
- Close contacts should be quarantined per current CDC protocols. (RECOMMENDED)
- Local health officials may identify other contacts who require quarantine. (RECOMMENDED)
- Administrators of the schools involved shall participate in all notification orders if they are notified of the presence of any laboratory positive or clinically diagnosed cases of COVID-19. (REQUIRED)
- The individual with COVID-19 shall not be identified by name to non-family or non-health department officials. (REQUIRED)
- Even if a family/student acknowledges and publicly discloses a positive test, school staff and officials must not participate in discussion or acknowledgment of a positive test by identifying a specific student. (REQUIRED)
- Students, coaches, or officials who were at the event, but not in close contact with a positive case, should continue to be closely monitored for any symptoms of COVID-19. (RECOMMENDED)
- Areas that were used by the sick person should be closed off and should not be used until after cleaning and disinfecting them (this includes surfaces or shared objects in the area). (RECOMMENDED)
- If possible, cleaning and disinfecting of the area should not occur until at least 24 hours have elapsed. (RECOMMENDED)
- If 24 hours is not feasible, as much time as possible should be allowed to pass before cleaning or disinfection occurs. (RECOMMENDED)



**2020-21 Healthy at Sports
Stage 3- Performance
Return to Competition: Individual
Sport Considerations**

**ALL SPORTS
GUIDANCE**

**RETURN TO PLAY OR INVOLVEMENT FOR POSITIVE COVID-19 TEST (STUDENT,
COACH OR OTHER ADULT, OR OTHER NON-SPECTATOR)**

**BASIC PROCEDURES INCLUDING ISOLATION, AND CONTACT TRACING, COMPLIANCE WITH
LOCAL HEALTH DEPARTMENT GUIDELINES, AND REPORTING**

- In the case of an athlete or a staff member receiving a positive test result while at a school facility, that individual shall wear a mask/face covering and remain in a safe area of isolation as determined by the medical staff and any caregivers associated with the student-athlete or staff member while they wait to be taken home. (REQUIRED)
- The infected individual should remain isolated at home or another agreed-upon destination, as long as appropriate care can be administered at that location. (RECOMMENDED)
- All efforts shall be made to avoid contact with infected student-athletes except by designated healthcare professionals wearing appropriate personal protective equipment (PPE). (REQUIRED)
- The local health department shall have already been contacted regarding the positive case. (REQUIRED)
- Individuals who test positive for COVID-19 shall follow the specific protocol established by the local health department, which shall include protocols for those exposed to the individual(s) with the positive test and involve full cooperation with contact tracing. (REQUIRED)
- Student-athletes who had mild COVID-19 symptoms that were managed at home should be seen by their medical provider for any persisting symptoms and continue to follow CDC's guidance "Isolate If You Are Sick" (<https://bit.ly/2QyFiYZ>). (RECOMMENDED)
- Please refer to updated CDC guidelines as this information is fluid and may change (<https://bit.ly/32prkOB>). (RECOMMENDED)

CONFIRMED POSITIVE CASE EVALUATION BY MEDICAL PROVIDED

- Student-athletes and others with a role on the team with a confirmed COVID-19 diagnosis shall consider undergoing an evaluation by their medical provider as a return to play or involvement following a positive test and confirmation requires written consent of an MD or DO. (REQUIRED)
- The members of the Kentucky Medical Association Committee on the Medical Aspects of Sports that serve as the KHSAA Sports Medicine Committee have developed a form for use in evaluating the next steps for persons in athletics who have tested positive. (RECOMMENDED)
- The form for family care physicians and other MD or DO which creates a decision tree is listed on the KHSAA website and is the official mechanism and decision matrix to be used. (RECOMMENDED)
- All should note that based on this review, consultation with a cardiologist may be required. (RECOMMENDED)

STEP-WISE RETURN TO PLAY PROTOCOL

- The KMA SMAC has developed and approved a protocol for return to play, which applies to both students and adults. (ADOPTED, AUGUST, 2020)
- A stepwise protocol is recommended for the physician and is listed as follows, with compliance by school personnel being required.
- Any return to play shall be preceded by a gradual and progressive return to physical exertion.
- Athletes should complete the progression below without the development of cardiopulmonary symptoms (chest pain, chest tightness, palpitations, shortness of breath, excessive fatigue, lightheadedness, pre-syncope, or syncope).
- Monitor the student-athlete closely for the development of any symptoms during this active progression.
- If any symptoms develop, the athlete should stop exertion immediately and be referred back to the evaluating physician for consideration of additional evaluation, including cardiology consultation, before resuming activity.



**2020-21 Healthy at Sports
Stage 3- Performance
Return to Competition: Individual
Sport Considerations**

**ALL SPORTS
GUIDANCE**

- Step 1: (2-Days Minimum) Light activity (walking, jogging, stationary bike) for 15 minutes or less at intensity no greater than 70% of maximum heart rate. NO resistance training.
 - Step 2: (1-day minimum) Add simple movement activities (For example, running drills) for 30 minutes or less at intensity no greater than 80% of maximum heart rate.
 - Step 3: (1-day minimum) Progress to more complex training for 45 minutes or less at intensity no greater than 80% maximum heart rate. May add light resistance training.
 - Step 4: (2-days minimum) Normal training activity for 60 minutes or less at intensity no greater than 80% maximum heart rate.
 - Step 5: Return to full activity.
- The document is provided for physicians who may evaluate and treat student-athletes diagnosed with COVID-19 infection. The information contained herein is based on the compilation and summary of expert recommendations of national and international sports medicine organizations.

EXERCISE AFTER CONFIRMED POSITIVE TEST

- No exercise is recommended for at least 14 days from diagnosis and seven days after all symptoms have resolved. (RECOMMENDED)
- After that period, gradual acclimation back to sports over a 10-to-14 day period, once the student-athlete is cleared to participate, is recommended following the KMA matrix as detailed at <https://bit.ly/32lhmO1>. (RECOMMENDED)

GENERAL AREAS OF CONSIDERATION FOR BOTH PRACTICES AND CONTESTS BY STUDENTS, STAFF, AND ALL INVOLVED

FACILITY CLEANING (ALL REQUIRED IN CONTEXT OF EXISTING KDE SCHOOL GUIDANCE AND PLANS)

- Each of these items shall be considered when developing plans after consultation with the local health department, to review most if not all of which were part of plans for the resumption of activity during the summer of 2020-21.
- Before an individual or group enters a facility, hard surfaces within that facility shall be wiped down and sanitized (chairs, furniture in meeting rooms, weight room equipment, bathrooms, athletic training room tables, etc.).
- Individuals shall wash their hands with warm water and soap for a minimum of 20 seconds or use hand sanitizer before touching any surfaces or participating in workouts.
- Hand sanitizers should be plentiful and available to individuals as they transfer from place to place.
- Appropriate clothing/shoes shall be worn at all times to minimize sweat from transmitting onto equipment/surfaces.
- Any equipment such as weight benches, athletic pads, etc. having holes with exposed foam shall be covered.
- Students must be encouraged to shower and wash their workout clothing immediately upon returning home.

ENTRANCE/EXIT STRATEGIES

- Consider strategies to prevent groups from gathering at entrances/exits of facilities to limit crossover and contact, including staggering starting/ending times. (RECOMMENDED)

PRE-WORKOUT SCREENING (ALL REQUIRED IN CONTEXT OF EXISTING SCHOOL GUIDANCE AND PLANS)

- All those involved in managing practice or competition shall be familiar with the signs and symptoms of COVID-19 as listed by the CDC at <https://bit.ly/3gqqMgn>.
- All coaches and students shall be screened daily for signs/symptoms of COVID-19 before participating, including a temperature check.



**2020-21 Healthy at Sports
Stage 3- Performance
Return to Competition: Individual
Sport Considerations**

**ALL SPORTS
GUIDANCE**

- Anyone with a temperature of greater than 100.4F degrees or higher shall not participate and should be sent home.
- Responses to screening questions for each person shall be recorded and stored.
- Any person with COVID-19 symptoms reported shall not be allowed to participate, should self-isolate, and contact their primary care provider or other health-care professional.
- Vulnerable individuals shall not supervise or participate in any workouts.

HYGIENE PRACTICES (ALL REQUIRED IN CONTEXT OF EXISTING SCHOOL GUIDANCE AND PLANS)

- Wash your hands with soap and warm water or use hand sanitizer, especially after touching frequently used items or surfaces for a minimum of 20 seconds.
- Sneeze or cough into a tissue, or the inside of your elbow.
- Avoid touching your face.
- Disinfect frequently used items and surfaces as much as possible.
- Use masks/face coverings while in public, and particularly when using mass transit, unless medically waived or while actively eating or drinking.

HYDRATION/FOOD (ALL REQUIRED IN ADHERENCE CONTEXT OF EXISTING SCHOOL GUIDANCE AND PLANS)

- All students must bring their personal water bottle or use disposable single wax-lined cups.
- Water bottles must not be shared.
- Food shall not be shared and should be pre-packaged (i.e. no open containers with fruit slices, etc.)
- Hydration stations (water cows, water trough, water fountains, etc.) shall not be utilized.

LOCKER ROOMS

- To the greatest extent possible, indoor locker rooms should not be used as their use will cause additional cleaning after normal business hours. (RECOMMENDED)
- Outdoor canopies and areas that allow for spacing outdoors are an acceptable alternative to a locker room. (RECOMMENDED)

SOCIAL DISTANCING (ALL REQUIRED WHERE PRACTICAL AND FEASIBLE)

- Social distancing of at least 6 feet shall be maintained at all times, where feasible.
- No hugging, high fives, shaking hands, or fist bumps for support/encouragement.
- Behavior shall be modeled by adults, who must insist on compliance by students.
- Social distancing shall be maintained during the National Anthem and on sidelines.
- Outdoor sports may need to extend bench areas to permit social distancing.
- Indoor sports may need to use lower-level bleachers or multiple levels of seating to ensure social distancing among team members before addressing attendees.
- Be mindful as we teach the students, it won't be like this forever!

SPECIAL EMPHASIS FOR STUDENT-ATHLETICS (ALL STRONGLY RECOMMENDED WHERE PRACTICAL AND FEASIBLE FOR BOTH PRACTICES AND CONTESTS, SIMILAR TO SEGMENT 3 GUIDANCE)

- Teams should make each student responsible for their supplies.
- Students should wear their appropriate workout clothing and not share clothing.
- Players should not touch other player's equipment.
- No workout or practice should be done without players wearing shirts/tops.
- Individual clothing/towels should be washed and cleaned after every workout.
- Hand sanitizer should be plentiful at all contests and practices.
- Athletes should tell coaches immediately when they are not feeling well.
- Mouth Guards
 - Student-Athletes should keep their mouth guards in their mouths throughout the competition.



**2020-21 Healthy at Sports
Stage 3- Performance
Return to Competition: Individual
Sport Considerations**

**ALL SPORTS
GUIDANCE**

- If the mouth guard is taken out proper disinfection of the mouthguard should be performed before reinsertion.
- Hands should also be washed or disinfected before putting back in the mouth.
- Student-athletes are encouraged to develop healthy habits including, but not limited to, a balanced diet, adequate sleep, and proper hydration.
- Healthy eating and attention to hydration are especially important for student-athletes to enhance training capacity and reduce the risk of illness and injury.
- High school athletes are at increased risk for dehydration, therefore coaches must emphasize the importance of drinking enough fluid before, during, and after practice and competition.
- Student-athletes should follow established guidelines for hydration and can refer to the National Athletic Trainer Association (NATA) Resource at <https://bit.ly/3hzhzUI>
- Student-athletes are encouraged to shower as quickly as possible after practice and games if such is practical at the practice or game site, and to do so at home otherwise.

SPECIAL EMPHASIS FOR COACHES (ALL REQUIRED WHERE PRACTICAL AND FEASIBLE FOR BOTH PRACTICES AND CONTESTS, SIMILAR TO SEGMENT 3 GUIDANCE)

- Communicate your guidelines to students and parents.
- Conduct workouts in “pods” of the same students always training and rotating together in practice to ensure more limited exposure if someone develops an infection.
- Limit game day (scrimmages or contests) workouts to no more than one hour per session/station, and be intentional in rotating athletes to be cognizant of the 6-15-48 rule (see <https://bit.ly/2FU4eba>).
- Keep accurate records of those athletes and staff who attend each practice in case contact tracing is needed.
- Coaches shall limit game-day squad sizes for social distancing purposes without exceeding state allowances.
- Coaches are reminded to wear proper coaching attire per weather conditions.
- Coaches shall bring their water bottle(s) and follow established guidelines for hydration.
- Coaches must model requirements for masks/face coverings at all times, unless medically waived or while actively eating or drinking.

SPECIAL EMPHASIS FOR PARENTS / GUARDIANS (ALL REQUIRED WHERE PRACTICAL AND FEASIBLE FOR BOTH PRACTICES AND CONTESTS, SIMILAR TO SEGMENT 3 GUIDANCE)

- Communicate your guidelines to children in congruence with guidelines established by your school and this document.
- A family’s role in maintaining safety guidelines for themselves and others cannot be overstated.
- Do not attend practices as it is their playing days not yours and your attendance could result in the spread of the virus.
- Parents/guardians shall monitor their children or any symptoms before any athletic activities.
- Children who are sick or showing symptoms must stay home. (If there is doubt stay home).
- Parents/guardians and coaches shall assess levels of risk based on individual athletes on the team who may be at a higher risk for severe illness.
- Provide personal items for your child and clearly label them.
- Disinfect your student’s equipment after each game or practice.
- Be prepared with masks/face coverings for members of your family if permitted to attend events, unless medically waived or while actively eating or drinking.
- Inform coaches if your student-athlete has been exposed to someone who is known to have COVID-19.
- Until this public health emergency has passed, strongly consider whether or not out of state or optional travel is necessary, particularly to and from those states identified at that time with having a current spread of the virus.



**2020-21 Healthy at Sports
Stage 3- Performance
Return to Competition: Individual
Sport Considerations**

**ALL SPORTS
GUIDANCE**

SPECIAL EMPHASIS FOR GAME DAY WORKERS (ALL REQUIRED WHERE PRACTICAL AND FEASIBLE FOR BOTH PRACTICES AND CONTESTS, SIMILAR TO SEGMENT 3 GUIDANCE)

- Thoroughly review and make determinations as to which workers are essential.
- Ensure that all workers comply with mask/face covering requirements at all times.
- All game day workers are subject to entry screening procedures.
- The press box/media area/finish area will be limited to essential personnel only, with all individuals respecting social distancing (consider additional accommodations outside if necessary).
- A non-working individual may not be in the press box/media area/finish area, including spouses, family members, and others.
- Game day workers are restricted to areas outside the team areas.

COMPETITION SCHEDULE AND RELATED CHANGES FOR 2020-21

- Due to issues around COVID-19 and the strong desire of the staff and Board of Control to engage students, practice and competition have been permitted to resume in fall sports, although delayed and with seasons necessarily shortened.
- Changes not related to the competition schedule are summarized on the KHSAA website at <https://bit.ly/3j6u8Xo> with interpretations at <https://bit.ly/2YzmywD>.
- Individual contest limitations were adopted to allow for a prorated elimination of the number of contests based on the revised length of the season, and individual limitations for each sport are contained on the specific sport pages of this document.

SEASON SEGMENTS

- Each sports season during the fall of 2020-21 is defined in three segments as listed in the specific sport section.
- The purpose of the segmented approach is to allow for a gradual progression as new and revised procedures are tried and revised as well as to monitor health statistics in the area of the competing schools.

IN AND OUT OF STATE CONTESTS

- It is recommended that contests not be played during the following seven-day period in communities where the incidence of COVID-19 exceeds 25 average daily cases per 100,000 population each Monday morning as detailed on the KDPH COVID-19 Dashboard map (listed in Red) at <https://bit.ly/2D0K526> (RECOMMENDED)
- Additional scheduling guidance will likely be forthcoming from both KDPH and the KHSAA concerning in-state scheduling instead of the map listed above and such will be released to the membership and updated routinely.
- Until further notice, out of state contests are restricted.
- Kentucky teams may only participate in contests (at home or away) against KHSAA member schools in Kentucky, or those schools located in a county in an adjacent state (Illinois, Indiana, Missouri, Ohio, Tennessee, West Virginia, or Virginia) where the county in which that school is located is contiguous to Kentucky. (REQUIRED)
- Refer to the list of states listed under "Travel Advisory" for list of states with excessively high transmission rates where travel should be restricted, even if in a Kentucky-contiguous county (updated daily), <https://bit.ly/2Ysaptt> (REQUIRED)
- This would also preclude any participation against foreign teams at this time, including Canada and Mexico. (REQUIRED)
- These provisions will be continually reviewed by the Commissioner's office and the Board of Control using current health data and any further revisions will be supplied to the membership.

NFHS SANCTIONED EVENTS

- Until further notice, there will be no NFHS sanctioned events approved which involve:
 - Events in non-bordering states if five (5) or more states are involved or



**2020-21 Healthy at Sports
Stage 3- Performance
Return to Competition: Individual
Sport Considerations**

**ALL SPORTS
GUIDANCE**

- Events in non-bordering states if more than eight (8) schools are involved. (REQUIRED)
- If the only reason for sanction being required is the co-sponsor or titling of the event but the contest meets the restrictions listed above, NFHS sanction will be considered. (REQUIRED)

TIME BETWEEN CONTESTS

- Scheduling consideration needs to be given when scheduling to minimize exposure and allow for sanitation between contests.
- Until further notice and to aid member schools in meeting social distancing requirements, events hosted by KHSAA member schools in Baseball, Basketball, Field Hockey, Soccer, Softball, and Volleyball are limited to a total of eight (8) teams in each facility with no cross-play between facilities. (REQUIRED)
- The limitation of eight (8) is per facility, not for a total event in that schools could hold multiple eight (8) team events if there were multiple facilities involved and teams did not cross-play between facilities. (REQUIRED)
- Schools should consider initially limiting to one contest per night and only extend to multiple contests when the same set of schools is involved in all games. (RECOMMENDED)
- Even with the same two schools involved, there should be time between games for the sanitization of equipment and restrooms and handwashing by all involved. (RECOMMENDED)
- In the case where additional schools are involved, there must be time between contests for egress of fans and participants, sanitization of equipment and restrooms, ingress of the teams for the next game. (REQUIRED)
- Consideration should also be given in large roster sports to holding Varsity, Junior Varsity, and Freshman contests on separate nights. (RECOMMENDED)

DISTRICT SEEDING CHANGES FOR 2020-21 UNTIL FURTHER NOTICE:

- All districts that have voted to seed will be reduced to a one-game seed plan. (REQUIRED)
- If teams within a district play multiple times, the first game played shall be counted as the seeded game. (REQUIRED)
- In all seeded games (including district football), those canceled due to the pandemic or mandatory quarantines, the current provision of counting a contest unable to be played or rescheduled will be implemented as a win and loss for both teams when calculating winning percentage. (REQUIRED)
- Staff will intercede and resolve contest disputes as necessary.

RPI CALCULATION, AUTOMATIC CANCELLATIONS, AND FORFEITURE/CANCELLATION CHANGES

- Adjustments for 2020-21 only were made to standings as well as RPI calculation methods due to possible cancelation of games resulting from the pandemic and local impact. (REQUIRED)
- All schools should in all contests, games canceled due to the pandemic or mandatory quarantines shall not have a result recorded, and no forfeit or forfeit provisions will be applied. (REQUIRED)
- The RPI will be adjusted for each of these types of contests to apply a consistent factor for one or both teams based on the ability of the game to be replaced. (REQUIRED)

GAME/CONTEST MANAGER (ALL REQUIRED)

- The Principal of the home team shall designate a home game/contest manager on site before the start of each contest at a time designated by the KHSAA.
- The game/contest manager shall have complete authority to order a contest delayed or stopped, and such shall be expected, if COVID-19 health and safety standards are not properly adhered to by all participants including coaches, players, team support members, fans, and all in attendance.
- The home game manager will meet with the officials during the pre-game period, making the officials aware of his/her primary location for the entire contest.



**2020-21 Healthy at Sports
Stage 3- Performance
Return to Competition: Individual
Sport Considerations**

**ALL SPORTS
GUIDANCE**

- The home game manager assumes responsibility for all aspects of crowd control such as ensuring that only authorized personnel are allowed in the team bench area.
- For outdoor venues, the home game manager will make sure that all fans remain at least ten yards from the playing area. In the event a natural barrier, such as a fence, is in place, this will be sufficient so long as it is not prohibited by the playing rules of that sport.
- For indoor venues, the home game manager will make sure that all fans are not seated in the first two to three rows of bleachers in those sections of bleachers located immediately behind the team benches to allow for additional space for bench personnel to create the appropriate social distancing.
- Unruly or disruptive fans will be escorted from the facility by the home game manager when necessary.
- The home game manager is responsible for providing proper security at each event.
- The home game manager shall identify a safe and secure area for officials to change before and after each contest whenever possible and shall ensure that officials are safely escorted from the venue after each contest.
- The home game manager shall have a venue-specific emergency action plan in place per KRS 160.445.

PRE-EVENT COMMUNICATION

- Host schools should communicate before an event these best practices and/or local restrictions regarding mitigation of COVID-19 to the visiting team, officials, media, fans, etc.
- Communication between member schools should also include, but is not limited to, information regarding parking, concessions, locker rooms, ticketing, payment methods, entrance/exit gates, bands, cheerleaders, etc.

DETERMINING GAME DAY ESSENTIAL PERSONNEL

- In contest planning, host sites must determine who is essential. (REQUIRED)
- Per the NFHS Guidance for Opening up High School Athletics, individuals should be grouped into tiers from essential to non-essential to decide which tiers will be allowed at an event with the recommended tiering of individuals: (RECOMMENDED)
 - Tier 1 (Essential): Athletes participating in the contest, coaches, officials, event staff, medical staff, security
 - Tier 2 (Preferred): Media, Limited Squad of Cheerleaders, Limited Squad of Band Members
 - Tier 3 (Non-essential): Spectators, vendors
- Each school will need to consult with the local health department as to the wisdom of attendance by those different tiers of individuals due to local and regional data. (REQUIRED)

TRANSPORTATION

- Provisions, including any limitations related to transportation, shall be managed through the Kentucky Department of Education Document - COVID-19 Considerations for Reopening Schools: Pupil Transportation at <https://bit.ly/3l84FPj> (REQUIRED)

ATTENDANCE AT EVENTS

ATTENDANCE DETERMINATION

- Attendance at any event is at the discretion of the host school or school system after consultation with local health officials but shall be guided by a thorough review including the identification of those who are Essential, Preferred, and Non-Essential. (REQUIRED)



**2020-21 Healthy at Sports
Stage 3- Performance
Return to Competition: Individual
Sport Considerations**

**ALL SPORTS
GUIDANCE**

- The following represent starting points for discussion with school/school system and consultation with local health officials for spectators but are not intended to create a statewide mandatory standard:
 - Consider inviting local public health officials to your school to review specific facility concerns related to attendance, ingress, egress, and crowd management. (RECOMMENDED)
 - Consult with local public health officials to ensure you have not missed any important considerations, given cases in the virus, community, and general area surrounding your county. (REQUIRED)
 - Once the plan has been determined and you have discussed it with local public health officials, communicate it to all as soon as possible but be flexible for consideration of future changes. (REQUIRED)
 - Consultation with local health department officials (or the collaboration of multiple health departments) in conjunction with the opponent(s) on attendance allowances, restrictions, or capacities. (REQUIRED)

ATTENDANCE LIMITATIONS

- In bleacher seating (including stadium chair seating), family units and those that traveled to the contest in the same vehicle should sit together while the entire group maintains six-foot social distancing from any other family or traveling group. (RECOMMENDED)
- In bleacher seating (including chair seating), on any set of bleachers with separate entrances from other sections, determine a maximum attendance at the facility during each segment:
 - ___% of each permanently divided bleacher section during Segment 1 while maintaining social distancing (purposely left to local determination due to facility variances);
 - ___% of each permanently divided bleacher section during Segment 2 while maintaining social distancing (purposely left to local determination due to facility variances); and
 - ___% of each permanently divided bleacher section during Segment 3 while maintaining social distancing (purposely left to local determination due to facility variances). (CONSIDER)
- If initial consultation discussions regarding attendance need a starting point, consider 20% in Segment 1, 30% in Segment 2, and 40% in Segment 3 for each facility.
- It is recommended that the initial segment allotment be the lowest to allow for a full review of procedures and capacity before season continuation. (RECOMMENDED)
- In bleacher seating, initial discussions can also consider an absolute maximum of no more than 50% capacity with a maximum of 250 people in the section (even if the bleachers can fit more with social distancing). (CONSIDER)
- If a stadium has multiple individual sets of bleachers, each separate area can be seen as a separate unit as above. (CONSIDER)
- Schools should consider having staggered arrival times if multiple entrances are not available. (RECOMMENDED)
- Plans should all carefully consider allowances for the parents and family of the competitors (along with social distancing requirements), with the traditional easily identifiable family being rare and somewhat difficult to quantify. (RECOMMENDED)
- For events held in non-bleacher venues, plans should include a maximum number of non-competitors which would include coaching staff, non-competing members, and any allowance for parents or the general public. (RECOMMENDED)
- Social distancing will always be more difficult in chair-back style seating as there exists minimal flexibility for social distancing.



**2020-21 Healthy at Sports
Stage 3- Performance
Return to Competition: Individual
Sport Considerations**

**ALL SPORTS
GUIDANCE**

- Plans should also be limited in consideration of the number of restrooms in the facility and their location relationship to the separate section entrances. (CONSIDER)

ATTENDANCE MAXIMUMS

- Until current orders related to venues and event spaces are rescinded and absent specific approval from the Governor's Office, *Healthy at Work*, no event may be approved for more than fifty percent of capacity (see Requirements for Venues and Event Spaces at the link at the end of this section for details). (REQUIRED)

TEAM AREAS

- Squad sizes were reduced in all fall sports with only those in uniform permitted in the team area.

NON-UNIFORMED TEAM MEMBERS (REQUIRED)

- Allowances for fields, team areas, and benches are detailed in the individual sport sections, however, in the sports of field hockey, football, soccer, and volleyball, those areas are restricted to the uniformed players, coaches, and essential individuals having an active role in game conduct or management.
- Schools should consider options for the placement of non-competing players to ensure social distancing as those players are not permitted in the team field or court areas. (RECOMMENDED)
- All others shall be seated in the general seating area and able to socially distance with those individual limitations contained on the specific sport pages of this document.

SIDELINE CHEERLEADERS (ALL RECOMMENDED)

- Schools should consider the placement of cheerleaders (with equal consideration for the opponent if the decision is made to allow) as they will need to be able to be in a separate and distinct area from the teams and with the ability to be socially distanced from other groups of individuals, including fans.
- In consideration of an overall spectator limitation, schools should limit the number of sideline cheerleaders to not exceed:
 - Twenty (20) per school during Segment 1;
 - Twenty-five (25) in Segment 2; and
 - Thirty (30) in Segment 3.
- All sideline cheerleaders are required to wear a mask at all times. (REQUIRED)
- Sideline cheer is technically a support group for various teams under local jurisdiction and different than competitive cheer, a KHSAA winter sport-activity.

BAND MEMBERS (ALL RECOMMENDED)

- Schools should consider the placement of band members (with equal consideration for the opponent), if the decision is made to allow, as they will need to be able to be in a separate and distinct area from the teams and with the ability to be socially distanced from other groups of individuals, including fans.
- Schools should consider reducing the full amount of the band permitted to attend due to attendance counting restrictions.
- Schools shall make the determination as to performances by bands, but all performances must be held within the restrictions of the "Guidance for a Return to High School Marching Band" document in terms of spacing and alignment to ensure social distancing. (REQUIRED)
- Bands shall be included in the counts of any bleacher limitations. (REQUIRED)

EVENT TICKETING (ALL RECOMMENDED)

- Wherever practical, possible, and feasible it is strongly recommended that no ticketing or as little as is workable be done at the walk-up gate for any event.
- Wherever practical, possible, and feasible, all ticketing should be done in advance through the participating schools.



**2020-21 Healthy at Sports
Stage 3- Performance
Return to Competition: Individual
Sport Considerations**

**ALL SPORTS
GUIDANCE**

- Wherever practical, possible, and feasible, ticketing should be electronic without the use of paper (receipts, tickets, etc.) as well as the use of cash.
- If these recommendations are followed, gate personnel will have more flexibility to ensure health screenings are completed on all those who enter a competition venue.
- The KHSAA staff can recommend one or more paperless ticket vendors.

CONCESSIONS (ALL RECOMMENDED)

- Allowances for concessions are at the discretion of the host school.
- For best practices and clarifications, guidance can be sought from the Healthy at Work Restaurant and Bar Guidance document online at <https://bit.ly/32nWISH>.
- Concession workers should be required to be familiar with both state and CDC guidance on food service, with the CDC information listed at <https://bit.ly/3jaOcl6>
- It is recommended that all items sold in the concession stand be pre-packaged before the sale.
- Pre-packaged can be items purchased like a bag of chips, bottled soft drinks, candy bars, etc. These types of items would be considered the safest and easiest to handle.
- However, pre-packaged can also be items packaged by concession staff, such as popcorn, hamburgers, hot dogs, etc. as long as they are safely handled before packaging.
- Concessions planning should also include accommodations for any attendees from the visiting team being served from a separate area to ensure social distancing during the contest.
- Plans should also be limited in consideration of the number of sales locations in the facility and their location relationship to the separate section entrances and all efforts made to minimize lines and unnecessary queuing where social distancing becomes a problem. (CONSIDER)

MASKS/FACE COVERINGS

BASIC MASK/FACE COVERING INFORMATION

- All individuals entering a venue before, during, and after a contest shall wear a mask/face covering. (REQUIRED)
- All coaches, non-competitors (substitutions), and cheerleaders shall wear a mask/face covering. (REQUIRED)
- A “gaiter” with multiple layers of cloth complies with this requirement provided it is properly worn covering the nose and mouth when the player is not participating and can easily slip down around the neck during participation. (RECOMMENDED)
- A splash shield attached inside a football helmet covering both the upper and lower parts of the inside of the helmet to cover the nose and mouth complies with the requirement provided the helmet is being worn. (CONSIDER)
- Anyone who is not engaged in strenuous physical activity is to be wearing a mask/face covering. (REQUIRED)

MASK/FACE COVERINGS DURING WORKOUTS, PRACTICES, AND COMPETITION

- If a mask becomes saturated with moisture from breathing or sweat, a coach or athlete should be changed you need to change into a dry mask as a wet mask is less efficient at filtering bacteria and viruses
- Masks should only be worn once during practice, workouts, or competition and then replaced with a fresh mask.
- All reusable cloth masks should be cleaned ideally in a washer with hot water and soap and then dried before the next use.
- Ironing a cloth on the highest setting possible for the material can also assist with disinfection after washing and drying.
- There are now multiple commercial reusable mask options available for use during exercise



**2020-21 Healthy at Sports
Stage 3- Performance
Return to Competition: Individual
Sport Considerations**

**ALL SPORTS
GUIDANCE**

FINAL CONTEST PLANNING

- Communicate in advance with incoming schools as well as officials regarding procedures and guidelines, including equipment to be provided and equipment opponent is expected to supply. (REQUIRED)
- The location for teams to evacuate to in the event of inclement weather shall be re-considered to determine whether social distancing is feasible or if alternate locations need to be secured. (REQUIRED)
- Ensure the home team has an on-site administrator. (REQUIRED)
- Collect contact information (cell number and email addresses) for each team. (REQUIRED)
- Devise protocols for facility entry including parking for teams, officials, and fans (RECOMMENDED)
- Devise entry and exit plan that allows for social distancing. (RECOMMENDED)
- It is strongly recommended to bring your personal hand sanitizer and to wash hands frequently. (RECOMMENDED)
- Clean and disinfect high-touch surfaces and equipment including balls using recommendations by the ball manufacturer. (REQUIRED)
- Incorporate public address announcements and signage regarding health guidelines and best practices. (RECOMMENDED)

**PRE-CONTEST GUIDANCE AND EVENT SETUP FOR ALL SPORTS AND SPORT-
ACTIVITIES**

- Limit the Officials/Scorer's Table to essential personnel including the home team scorer and timer while allowing for social distancing (also using mask/face coverings) and those not deemed essential personnel be provided an alternate seating location. (REQUIRED)
- Social distancing of at least 6 feet shall be maintained at all times. No hugging, shaking hands, or fist bumps for support/encouragement. (REQUIRED)
- Limit the team benches including the field/court area to only those essential individuals participating. (REQUIRED)
- Maintain social distancing of 6 feet between substitutes, officials, game workers, and/or team bench areas. (REQUIRED)
- Make sure facilities have been properly sanitized and have hand sanitizer and disposable mask/face covering available. Clean and disinfect frequently touched surfaces and equipment. (REQUIRED)
- Game-day workers are required to wear masks/face coverings and comply with current social distancing guidelines unless medically waived or while actively eating or drinking. (REQUIRED)
- No community water stations/coolers will be permitted. (REQUIRED)
- The pre-game protocol should be developed in advance (i.e. anthem, introductions, etc.) and that will send players to their respective positions for introductions. (REQUIRED)
- Everyone (including officials) must have their drink container that is not shared. (REQUIRED)
- Safe handling practices shall be adhered to during hydration, including refill retrieval and identification of water sources. (REQUIRED)
- Pre-game, quarter, halftime, and postgame meetings shall utilize social distance principles. (REQUIRED)
- Individuals (student-athletes, coaches, officials, other athletic personnel) should complete a daily personal health assessment. (RECOMMENDED)



**2020-21 Healthy at Sports
Stage 3- Performance
Return to Competition: Individual
Sport Considerations**

**ALL SPORTS
GUIDANCE**

TOOTH AND MOUTH PROTECTORS (FROM THE NFHS SPORTS MEDICINE ADVISORY COMMITTEE, POSITION STATEMENT, AUGUST 2020)

- The best evidence to date shows us that COVID-19 is spread through respiratory droplets.
- Saliva from mouthguards is unlikely to be a significant source of infection transmission.
- However, it is recognized that parents and others may find the prospect of athletes frequently placing and removing a mouthguard concerning.
- Given this reality, the NFHS SMAC suggests that state associations develop statements instructing athletes to refrain from the removal of mouthguards while on the playing field, court, or mat.
- If mouthguards are removed on the sidelines or bench area, the athlete should use hand sanitizer each time after touching the mouthguard.
- A properly fitted mouthguard is required by rule in the following NFHS Sports: Football, Field Hockey, Boys and Girls Lacrosse, Ice Hockey and Wrestling (for wrestlers wearing braces).

WATER, HYDRATION, AND HYGIENE DURING COMPETITION (ADAPTED FROM THE NFHS SPORTS MEDICINE ADVISORY COMMITTEE, POSITION STATEMENT, AUGUST, 2020)

- All students must bring their water bottles. (REQUIRED)
- Water bottles must not be shared. (REQUIRED)
- Food should not be shared. (REQUIRED)
- Hydration stations (water cows, water trough, water fountains, etc.) must not be utilized. (REQUIRED)
- The KHSAA will recommend the extension of time-outs to ensure that athletes have time to be given a personal water bottle if that is the desired method selected by a school, and officials associations will be instructed to be permissive with this time. (REQUIRED)
- Schools should consider the use of disposable wax-lined paper cups delivered on trays or in carriers instead of personal water bottles and perhaps seek local fast-food restaurants for a donation if it is impractical for personalized water bottles to be used during time-outs. (RECOMMENDED)

PLAYING RULES

- Various playing rule modifications are available for use during the pandemic and may help ensure social distancing and other key criteria being able to be met while minimizing unnecessary contact. For references, see the KHSAA website at <https://bit.ly/2R4dvzz> and <https://bit.ly/3byx1xH>.

MEDIA RESTRICTIONS AND CONSIDERATIONS

- Media access may be limited especially if there are limits to capacity. (RECOMMENDED)
- Establish a limit on the number of credentialed media members at each event (number of passes per outlet, priority to those who regularly cover, home/visitor split, etc.). (CONSIDER)
- Encourage media members to RSVP in advance of the game, so that you can allocate space accordingly and grant access to any media on a "waiting list". (CONSIDER)
- Inform the visiting Athletic Director on the number of spaces available for the visiting team media. (RECOMMENDED)
- The press box will be limited to essential personnel only, with all individuals respecting social distancing (consider additional accommodations outside if necessary). (REQUIRED)
- No non-working individual may be in the working press area, including spouses, family members, and others. (REQUIRED)



**2020-21 Healthy at Sports
Stage 3- Performance
Return to Competition: Individual
Sport Considerations**

**ALL SPORTS
GUIDANCE**

- The media is restricted to areas outside the team areas. (REQUIRED)
- The media should notify the host school in advance of arrival before practice and games for approval. (RECOMMENDED)
- Media areas should be marked to promote social distancing. (RECOMMENDED)
- Interview opportunities may be limited during the week. (RECOMMENDED)
- Incorporate virtual media availability sessions for weeks with high demand. (CONSIDER)
- Media members will wear masks/face coverings at all times. (REQUIRED)
- Game management should conduct a basic wellness check before entry (temperature, symptoms, exposure, etc.) (RECOMMENDED)
- Staff shall disinfect the press box and working media areas before and after each game. (REQUIRED)
- Assign a staff member(s) to monitor compliance by media members. (RECOMMENDED)
- Meals and concessions offered to the media shall follow established guidelines including pre-packaging with no buffets or open lines. (REQUIRED)
- Press box windows and doors should remain open so as not to restrict air flow. (RECOMMENDED)
- Disseminate as much information online as possible (limit handouts). (RECOMMENDED)
- Avoid bringing coaches and student-athletes into the press box for pregame and postgame interviews. Conduct all interviews in an open-air environment with proper social distancing. (RECOMMENDED)
- Do not share microphones and headsets as each individual is to have his/her dedicated equipment. (RECOMMENDED)
- Consult with Head Coach and/or Athletic Director before conducting any student-athlete interview to ensure the subject is comfortable with doing so. (CONSIDER)
- Establish operational hours for press box and media work areas, and display with proper signage. (REQUIRED)
- Limit field access to working media members only (those who are actively performing work assignments). (CONSIDER)
- Incorporate easily identifiable credentials to ensure only authorized personnel are in restricted areas. (CONSIDER)
- If radio space is limited to the home team, try to facilitate a shared feed of the home team's broadcast if possible. (CONSIDER)
- Interviews shall only be conducted if social distancing protocols can be followed. (REQUIRED)



**2020-21 Healthy at Sports
Stage 3- Performance
Return to Competition: Individual
Sport Considerations**

**ALL SPORTS
GUIDANCE**

REFERENCES LINKS AND SOURCES

- KHSAA Healthy at Sports website, <https://bit.ly/32qxWME>
- KHSAA, Bylaw and Policy Revisions/Waivers Due to COVID-19, <https://bit.ly/3j6u8Xo>
- KHSAA, Frequently Asked Questions Regarding Resumption of Sport and Sport-Activities, <https://bit.ly/2YzmywD>
- NFHS, NFHS Guidance for Opening Up High School Athletics and Activities, <https://bit.ly/32mfR1X>
- NATA, Healthy Hydration for Young Athletes, <https://bit.ly/3hxxzUJ>
- KYPGA, Junior Tour Updated Spectator Policy for KYPGA Junior Tour, <https://bit.ly/2EnwyCb>
- KMEA, Guidance for a Return to High School Marching Band, <https://bit.ly/3aWXzIF>
- USA Cheer, Return to Cheer and STUNT Guidelines, <https://bit.ly/326E1P8>
- NCAA Return to Play Guidance, <https://bit.ly/3m9ez3N>
- CDC, COVID-19 Resource Headquarters Page, <https://bit.ly/3aVIWX7>
- CDC, Definitions of Symptoms for Reportable Illnesses, <https://bit.ly/2G8B5Jf>
- CDC, Guidance on Retail or Food Service Workers, <https://bit.ly/3jaOcl6>
- CDC, Guideline for Disinfection and Sterilization in Healthcare Facilities, 2008, <https://bit.ly/31qomK9>
- CDC, Isolate If You Are Sick, <https://bit.ly/2QyFiYZ>
- CDC, Public Health Guidance for Community-Related Exposure, <https://bit.ly/2FU4eba>
- CDC, Symptoms of Coronavirus, <https://bit.ly/3gqqMgn>
- CDC, When to Quarantine, <https://bit.ly/3lJFpFE>
- CDC, When You Can be Around Others After You Had or Likely Had COVID-19, <https://bit.ly/32prkOB>
- CDC, COVID-19 Testing Overview, <https://bit.ly/2DqqlQd>
- CDC, Overview of Testing for SARS-CoV-2 (COVID-19), <https://bit.ly/2EL9IKI>
- CDC, Considerations for Wearing Masks, <https://bit.ly/3idB1pR>
- CDC, Reopening Guidance for Cleaning and Disinfecting Public Spaces, Workplaces, Businesses, Schools, and Homes, <https://bit.ly/2ZiFmR5>
- CDC, Cleaning and Disinfecting Public Spaces, <https://bit.ly/33cRMLs>
- CDC, Considerations for Events and Gatherings, <https://bit.ly/2Zhf1mE>
- CDC, Guidance for Social Distancing, Quarantine, and Self-isolation, <https://bit.ly/2ZdDCIU>
- KDPH, Kentucky Department of Public Health, Primary COVID-19 Site, <https://bit.ly/2Ysaptt>
- Healthy at Work, Requirements for Venues and Event Spaces, <https://bit.ly/2FLLZioA>
- Healthy at Work, Requirements for Restaurants and Bars, <https://bit.ly/32nWISH>
- Google, Chiefs Planet, Chiefs Mahomes and the Chiefs doing a Len Dawson huddle, <https://bit.ly/3aWReNw>
- NOCSEA, Certification to NOCSAE Standards and Add-On Helmet Products, <https://bit.ly/3jbtHet>
- GHK (Golf House Kentucky,) Tournament Operations Protocol COVID-19 Related Guidelines*, <https://bit.ly/34s5Ra7>
- KDE Flagship Reopening Document, Guidance on Safety Expectations and Best Practices for Kentucky Schools (K-12), <https://bit.ly/3eB1jkg>
- KDE, COVID-19 Updates and Information for P-12 Education, <https://bit.ly/3aS3uPh>
- KDE, COVID-19 Considerations for Reopening Schools: Pupil Transportation, <https://bit.ly/3l84FPj>
- KDPH, Archived Daily Reports since June 1, 2020, <https://bit.ly/3hsM3Y1>
- KDPH, College and University Public Health Report, <https://bit.ly/3hnFYMm>
- KDPH, Daily Detailed Report, <https://bit.ly/2EkNnOt>
- KDPH, K-12 School Public Health Report, <https://bit.ly/2EsLf6N>
- KDPH, Long Term, and Congregate Facilities Report, <https://bit.ly/3gwZTqQ>
- KDPH, Public Health Dashboard including 7-Day Incidence Map, <https://bit.ly/2D0K526>
- KMA, COVID-19 Medical Evaluation and Return-to-Activity Guidance for Middle and High School Student-Athletes, <https://bit.ly/32lhmO1>
- AMSSM, Interim Guidance on the Preparticipation Physical Exam for Athletes During the SARS-CoV-2 Pandemic, <https://bit.ly/3bttPDx>
- Interim Guidance on the Preparticipation Physical Exam for Athletes During the SARS-CoV-2 Pandemic, <https://bit.ly/3bttPDx>
- UW School of Medicine, The Impact of School Closures and Sport Cancellations on the Health of Wisconsin Adolescent Athletes, <https://bit.ly/3hKLoRH>



**2020-21 Healthy at Sports
Stage 3- Performance
Return to Competition: Individual
Sport Considerations**

**ALL SPORTS
GUIDANCE**

- COVID-19 Considerations for Reopening Schools Supporting Student and Staff Wellness, <https://bit.ly/3530NcO>
- The White House, Opening Up America Again, <https://bit.ly/3h7M96s>
- FDA, Emergency Use Authorization to Yale School of Public Health for SalivaDirect, <https://bit.ly/31tpdtP>



**2020-21 Healthy at Sports
Stage 3- Performance
Return to Competition: Individual
Sport Considerations**

**ALL SPORTS
GUIDANCE**

CONTENTS

ALL SPORTS GUIDANCE 2

 Introduction 2

 Document Versioning 3

 General Guidance Information 3

 Information Sources 4

 Education and Information 4

 Compliance standard and expectations 5

 Screening of all Entering the Facility for Practice or Competition 6

 Mass team Testing for COVID-19 7

 COVID-19 Basic Definitions – Isolation and Quarantine 7

 Protocol for Suspected Cases of COVID-19 8

 Protocol for Positive Cases of COVID-19 8

 Return to Play or Involvement for Positive COVID-19 Test (Student, Coach or Other Adult, or other non-spectator) 9

 Basic Procedures Including Isolation, and Contact Tracing, Compliance with Local Health Department Guidelines, and Reporting 9

 Confirmed Positive Case Evaluation by Medical Provided 9

 Step-Wise Return to Play Protocol 9

 Exercise after Confirmed Positive Test 10

 General Areas of Consideration for Both Practices and Contests by Students, Staff, and all Involved 10

 Facility Cleaning (All Required in Context of Existing KDE School Guidance and Plans) 10

 Entrance/Exit Strategies 10

 Pre-Workout Screening (All Required in Context of Existing School Guidance and Plans) 10

 Hygiene Practices (All Required in Context of Existing School Guidance and Plans) 11

 Hydration/Food (All Required in Adherence Context of Existing School Guidance and Plans) 11

 Locker Rooms 11

 Social Distancing (All Required where practical and feasible) 11

 Special Emphasis for Student-Athletics (All Strongly Recommended where practical and feasible for both practices and contestS, similar to Segment 3 Guidance) 11

 Special Emphasis for Coaches (All Required where practical and feasible for both practices and contests, similar to Segment 3 Guidance) 12

 Special Emphasis for Parents / Guardians (All Required where practical and feasible for both practices and contestS, similar to Segment 3 Guidance) 12

 Special Emphasis for Game Day Workers (All required where practical and feasible for both practices and contestS, similar to Segment 3 Guidance) 13

 Competition Schedule and Related Changes for 2020-21 13

 Season Segments 13

 IN AND Out of State Contests 13

 NFHS Sanctioned Events 13

 Time Between Contests 14

 District Seeding Changes for 2020-21 until further notice: 14

 RPI Calculation, Automatic Cancellations, and Forfeiture/Cancellation Changes 14

 Game/Contest Manager (All Required) 14

 Pre-Event Communication 15

 Determining Game Day Essential Personnel 15

 Transportation 15

 Attendance at Events 15

 Attendance Determination 15

 Attendance Limitations 16

 Attendance Maximums 17

 Team Areas 17

 Non-Uniformed Team Members (Required) 17



**2020-21 Healthy at Sports
 Stage 3- Performance
 Return to Competition: Individual
 Sport Considerations**

**ALL SPORTS
 GUIDANCE**

Sideline Cheerleaders (All recommended)..... 17
 Band Members (All recommended)..... 17
 Event Ticketing (All Recommended) 17
 Concessions (All Recommended) 18
 Masks/Face Coverings 18
 Basic Mask/Face Covering Information..... 18
 Mask/Face Coverings During Workouts, Practices, and Competition 18
 Final Contest Planning 19
 Pre-Contest Guidance and Event Setup for All Sports and Sport-Activities 19
 Tooth and Mouth Protectors (From the NFHS Sports Medicine Advisory Committee, Position Statement, August 2020) 20
 Water, Hydration, and Hygiene During Competition (Adapted from the NFHS Sports Medicine Advisory Committee, Position Statement, August, 2020)..... 20
 Playing Rules..... 20
 Media Restrictions and Considerations 20
 References Links and Sources 22
 Contents 24



**2020-21 Healthy at Sports
Stage 3- Performance
Return to Competition: Individual
Sport Considerations**

**OFFICIALS AND
OFFICIATING GUIDANCE**

OFFICIALS AND OFFICIATING GUIDANCE

CROSS-REFERENCE TO OTHER GUIDANCE

- While this section deals with guidance for contest officials, all involved in the athletic program are expected to reference all guidance standards, including the many that may be non-sports specific.
- It is in the best interest of all officials to be familiar with all aspects of the guidance documents for Stage 3.
- Guidance is broken into three areas:
 - REQUIRED- These standards are required at all sanctioned contests.
 - RECOMMENDED- These standards are best practices during all contests during the pandemic and are therefore recommended for all contests.
 - CONSIDER- While these items are also best practices during this time, local site discretion should be exercised to determine if these items are practical and feasible for use at the contest.
- Differences in the guidance are necessitated by the difference in sports, facilities, and geographic areas, which are pronounced during normal years, and magnified this school year.
- Ensure that you have studied all of the documents on the individual pages of this guidance for the sports in which you are licensed.

LICENSING

- All officials shall be currently licensed with the KHSAA.
- All officials shall view the current year rules interpretation clinic on the KHSAA website following the published schedule.
- All officials should consider becoming a member of the National Association of Sports Officials.
- All officials should ensure that the officiating demographic records on arbitersports.com match the records on file with the KHSAA.

ADVANCE OF GAME DAY

- Contact the host school Athletic Director in advance of the contest to be informed on any additional protocols required locally (temperature checks, symptoms questionnaire, specific waivers, requirements for masks/face coverings, etc.). (REQUIRED)
- Bring your water bottle, towel, hand sanitizer, flags, equipment, etc. (REQUIRED)
- If carpooling with other officials wear a mask/face covering when traveling. (RECOMMENDED)
- Vulnerable individuals are defined by the CDC as people 65 years of age and older and others with serious underlying health conditions. Officials fitting this description may wish to seek medical advice before deciding to officiate. (CONSIDER)

GAME DAY

- Take your temperature in the morning and then again before leaving home/work for a contest.
- If greater than 100.4F, notify your assigner and the school administrator immediately that you will not be able to fulfill the assignment. (REQUIRED)
- Identify the host school administrator and local association for assistance in dealing with any issues (REQUIRED)
- Officials are not the "mask" police for fans and spectators; the host school administrator shall manage adherence. (REQUIRED)
- Officials are expected to use the online incident form to report any non-compliance with public health standards by anyone observed who is not in the team boxes or on the playing field. (REQUIRED)



**2020-21 Healthy at Sports
Stage 3- Performance
Return to Competition: Individual
Sport Considerations**

**OFFICIALS AND
OFFICIATING GUIDANCE**

- Officials are expected to both enforce (via the Unsportsmanlike Conduct rule) and use the online incident form to report any non-compliance with public health standards by anyone in the team boxes or on the playing field. (REQUIRED)
- Officials are advised to come dressed to officiate. (RECOMMENDED)
- Upon arrival at the contest site, wash/sanitize hands regularly. (REQUIRED)
- Review sport-specific pre- and post-contest protocol (anthem, handshakes, etc.) (REQUIRED)
- If you do not feel well and COVID-19 symptoms are present, notify the contracted school, your crew members, assigner, and stay at home. (REQUIRED)
- Do not share equipment, uniforms, towels, etc. (REQUIRED)
- Bring your drinks. (REQUIRED)
- Following the conclusion of a contest, leave the contest area, and do not interact with others. (REQUIRED)
- Pre-contest official crew meetings should be held outside when possible and where social distancing is easier to execute. (RECOMMENDED)
- Face coverings shall be worn by officials during pre-contest responsibilities. (REQUIRED)
- The officials/scorer's table is limited to home team essential personnel exclusively and is to be socially distanced. (REQUIRED)
- Visiting team personnel are not deemed essential and need to find an alternative socially distanced seating location. (REQUIRED)

PLAYING RULES

- Various playing rule modifications are available for use during the pandemic and may help ensure social distancing and other key criteria being able to be met while minimizing unnecessary contact. For references, see the KHSAA website at <https://bit.ly/2R4dvzz> and <https://bit.ly/3byx1xH>.

RULES REQUIREMENTS

- Limit length and attendees during Pre-Game/Match Conference (See specific sport requirements). (REQUIRED)
- Suspend handshakes, fist bumps, bro hugs, etc. (pre/during/post contest). (REQUIRED)
- Execute social distancing when communicating with coaches, players, other crew members. (REQUIRED)
- Execute social distancing in substitution procedures during contests. (REQUIRED)
- To maintain social distancing, officiating positions may need to be changed in a manner that is not necessarily in conformance with standard officiating procedures. (RECOMMENDED)

**UNIFORM AND EQUIPMENT FOR OFFICIALS (ADOPTED FOR OPTIONAL
CONSIDERATION FOR ALL OFFICIALS 2020-21)**

- Long sleeves are permissible provided there are no color restrictions in the specific sport.
- Long pants are permissible.
- Undergarments are permissible but must be of similar length for the individual and solid color for the crew unless otherwise specified.
- Mask/face coverings are permitted without color restrictions.
- Air horns/electronic whistles are permitted and officials should choose a whistle whose tone will carry outside such as:
 - Fox 40 Mini -
 - Fox 40 Unisex Electronic – (3 tone) -
 - Ergo-Guard - (3 tone) - orange
 - Windsor - (3 tone)

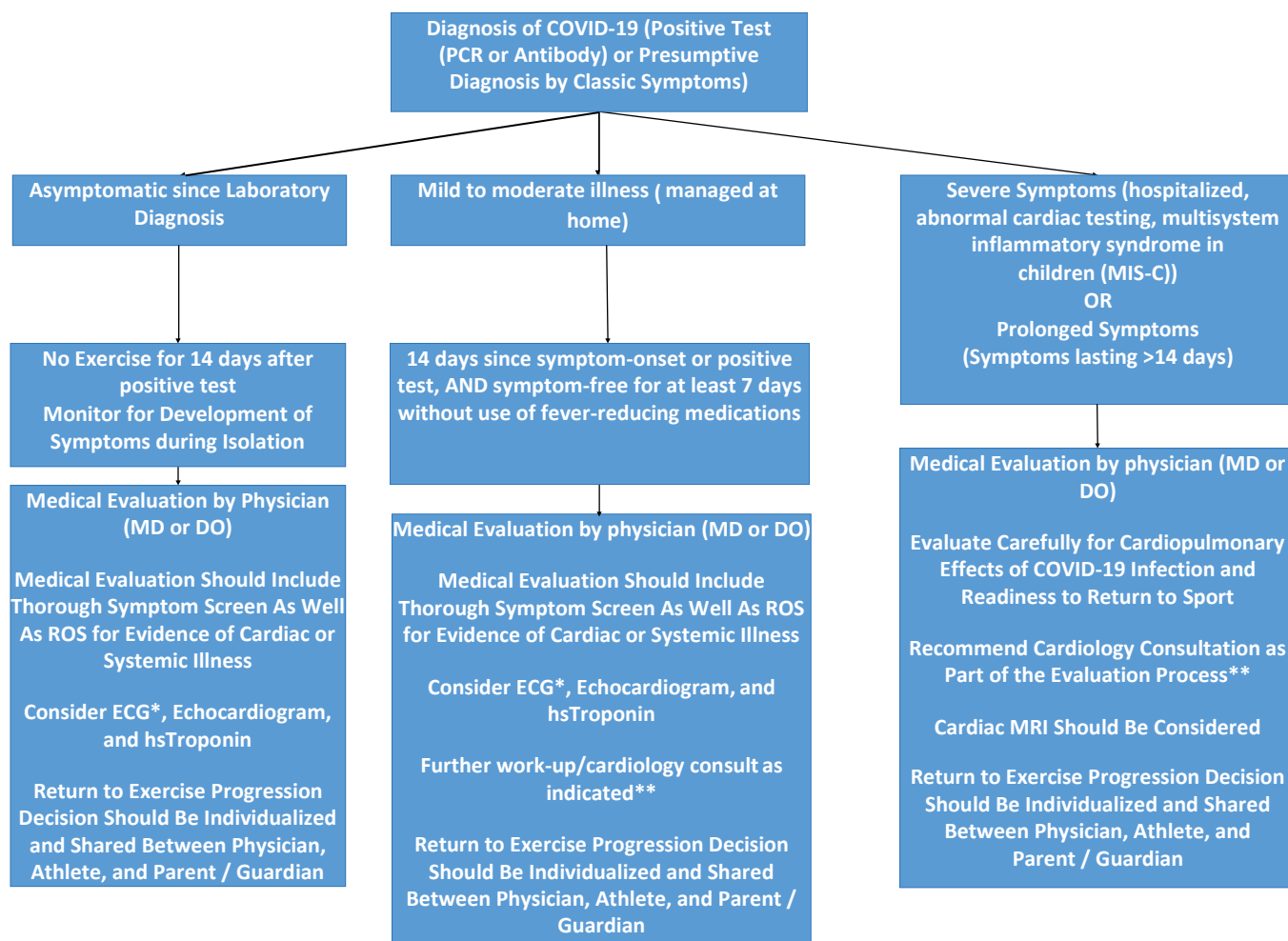


**2020-21 Healthy at Sports
Stage 3- Performance
Return to Competition: Individual
Sport Considerations**

**OFFICIALS AND
OFFICIATING GUIDANCE**

- Check the market for other choices.
- Gloves are permitted.
- Headsets for communication are permitted.
- Officials should not be required to wear jackets during pre-game field/court/player/warm-up observation.

KMA Committee on Sports Medicine COVID-19 Medical Evaluation and Return-to-Activity Guidance for Middle and High School Student-Athletes



1) Drezner J.A., et al. (2020). Cardiopulmonary Considerations for High School Student-Athletes During the COVID-19 Pandemic: NFHS-AMSSM Guidance Statement." *Sports Health Available Free Online at <https://journals.sagepub.com/doi/full/10.1177/1941738120941490>. (Updated August 2020)*

2) Cardiac Considerations for Student-Athletes during the COVID-19 Pandemic Available Free Online at https://www.amssm.org/Content/pdf_files/COVID19/NCAA-COVID-19-Algorithm-12-AUG-2020.pdf

* ECG changes suggestive of myocarditis include: diffuse ST elevation, ST depression, T wave inversion, pathologic Q waves, and PR depression

**Testing considerations: ECG, hs-Tn, Echo, Cardiac MRI, Holter, Stress test, Chest X-ray, Spirometry, PFTs, D- dimer, and Chest CT as Indicated

**KMA Committee on Sports Medicine:
Return to Activity (RTA) Protocol After COVID-19 Infection**

Any return to play should be preceded by a gradual and progressive return to physical exertion. Athletes should complete the progression below without the development of cardiopulmonary symptoms (chest pain, chest tightness, palpitations, shortness of breath, excessive fatigue, lightheadedness, pre-syncope, or syncope). Monitor the student-athlete closely for the development of any symptoms during this active progression. If any symptoms develop, the athlete should stop exertion immediately and be referred back to the evaluating physician for consideration of additional evaluation, including cardiology consultation, before resuming activity.

- **Step 1: (2-Days Minimum)** Light activity (walking, jogging, stationary bike) for 15 minutes or less at intensity no greater than 70% of maximum heart rate. NO resistance training
- **Step 2: (1-day minimum)** Add simple movement activities (For example, running drills) for 30 minutes or less at intensity no greater than 80% of maximum heart rate
- **Step 3: (1-day minimum)** Progress to more complex training for 45 minutes or less at intensity no greater than 80% maximum heart rate. May add light resistance training.
- **Step 4: (2-days minimum)** Normal training activity for 60 minutes or less at intensity no greater than 80% maximum heart rate
- **Step 5: Return to full activity**

**RTA Protocol adapted from Elliott N, et al. Infographic. British Journal of Sports Medicine, 2020.*

Disclaimer: This document is provided for physicians who may evaluate and treat student-athletes diagnosed with COVID-19 infection. The information contained herein is based on the compilation and summary of expert recommendations of national and international sports medicine organizations.

The Kentucky Medical Association (KMA) is not engaged in rendering medical advice or professional services and expresses no opinion as to the feasibility, applicability, or impact to your particular practice. References and links to third parties do not constitute an endorsement or warranty by the KMA, and KMA hereby disclaims all express and implied warranties of any kind. The information is not intended or implied to be a substitute for professional medical advice, diagnosis, or treatment. Instead, appropriate professional judgment, consultation with specialists and other resources, independent verification, and individualization of patient care should guide physicians in patient diagnosis and treatment decisions. Therefore, the use of this information is voluntary, and reliance on it should only be undertaken after an independent review of its accuracy, completeness, efficacy, and timeliness.



KHSAA COVID-19 Return to Play Form

If an athlete has tested positive or was presumed positive for COVID-19 based on symptoms, he/she should rest from physical activity for at least 14 days from the time of onset of symptoms or positive test. He/she must then be cleared for progression back to activity by an approved health care provider (MD/DO). Any return to activity should follow the recommended Return to Play (RTP) Progression described below.

Athlete's Name: _____ DOB: _____ Date of Positive Test: _____

THIS RETURN TO PLAY IS BASED ON TODAY'S EVALUATION

Date of Evaluation: _____

Criteria to return to be completed by MD or DO. (Please check below as applies)

- 14 days have passed since the onset of symptoms or a positive test
- All symptoms (cough, shortness of breath, fever ($\geq 100.4F$), etc.) have resolved for at least 7 days without use of fever reducing medication AND
- The athlete was not hospitalized due to COVID-19 infection.
- PLUS Cardiac screen negative for myocarditis/myocardial ischemia (All answers below must be NO)

Chest pain/tightness with exercise	YES	<input type="checkbox"/>	NO	<input type="checkbox"/>
Unexplained Syncope/near syncope	YES	<input type="checkbox"/>	NO	<input type="checkbox"/>
Unexplained/excessive dyspnea/fatigue w/exertion	YES	<input type="checkbox"/>	NO	<input type="checkbox"/>
New palpitations	YES	<input type="checkbox"/>	NO	<input type="checkbox"/>
Heart murmur on exam	YES	<input type="checkbox"/>	NO	<input type="checkbox"/>

NOTE: If any cardiac screening question is positive or if athlete had greater than mild symptoms during the illness, consider further workup as indicated. Additional workup may include ECG, Echocardiogram, High Sensitivity Troponin, Cardiac MRI, Cardiology Consultation, CXR, Spirometry, PFTs, Chest CT, etc.

- The athlete HAS satisfied the above criteria and IS cleared to start the return to activity procedures (RTP).
- The athlete HAS NOT satisfied the above criteria and IS NOT cleared to return to activity

Medical Office Information (Please Print/Stamp):

Evaluator's Name: _____ MD or DO

Evaluator's Address: _____

Office Phone: _____

Evaluator's Signature: _____

Return to Play (RTP) Procedures After COVID-19 Infection

Athletes must complete the progression below without development of chest pain, chest tightness, palpitations, lightheadedness, pre-syncope or syncope. If these symptoms develop, patient should be referred back to the evaluating provider who signed the form.

- **Stage 1: (2 Days Minimum)** Light activity (walking, jogging, stationary bike) for 15 minutes or less at intensity no greater than 70% of maximum heart rate. NO resistance training.
- **Stage 2: (1 Day Minimum)** Add simple movement activities (For example, running drills) for 30 minutes or less at intensity no greater than 80% of maximum heart rate
- **Stage 3: (1 Day Minimum)** Progress to more complex training for 45 minutes or less at intensity no greater than 80% maximum heart rate. May add light resistance training.
- **Stage 4: (2 Days Minimum)** Normal training activity for 60 minutes or less at intensity no greater than 80% maximum heart rate
- **Stage 5: Return to full activity**

Cleared for Full Participation by School Personnel (Minimum 7 days spent on RTP): _____